



SOTA *state of the art*
WEIGHTLOSS

Maintenance
Shopping List

Breakfast Items



Nutrition Facts

1 Serving Per Bag
Serving Size 1 Bag (22g)

Amount Per Serving	
Calories	100
Calories from Fat	30
	% DV*
Total Fat 3g	5%
Saturated Fat 0g	0%
Trans Fat 0g	
Cholesterol 7mg	2%
Sodium 30mg	0%
Total Carbohydrate 1g	0%
Dietary Fiber 1g	4%
Sugars 0g	
Protein 16g	32%
Vitamin A	0%
Vitamin C	0%
Calcium	25%
Iron	0%



Nutrition Facts

7 servings per container
Serving size 3/4 Cup (28g)

Amount Per Serving	
Calories	110
	% Daily Value*
Total Fat 6g	9%
Saturated Fat 5g	27%
Trans Fat 0g	
Cholesterol 10mg	4%
Sodium 60mg	2%
Total Carbohydrate 8g	3%
Dietary Fiber 2g	7%
Total Sugars 0g	
Includes 0g Added Sugars	0%
Protein 12g	24%

Available at www.thecerealschool.com

Available at www.magicspoon.com



Nutrition Facts

About 6 servings per container
Serving size 1/2 Cup (36g)

Amount Per Serving	
Calories	110
	% Daily Value*
Total Fat 5g	7%
Saturated Fat 0.5g	3%
Trans Fat 0g	
Cholesterol 0mg	0%
Sodium 110mg	5%
Total Carbohydrate 14g	5%
Dietary Fiber 9g	32%
Total Sugars 0g	
Includes 0g Added Sugars	0%
Protein 11g	22%
Vitamin D 0mcg	0%
Calcium 50mg	4%
Iron 1.6mg	9%
Potassium 30mg	1%

*The % Daily Value (DV) tells you how much a nutrient in a serving of food contributes to a daily diet. 2,000 calories a day is used for general nutrition advice.



Nutrition Facts

7 Servings Per Container
Serving Size 3/4 cup (35g)

Amount Per Serving	
Calories	130
	% Daily Value*
Total Fat 2g	3%
Saturated Fat 0g	0%
Trans Fat 0g	
Cholesterol 0mg	0%
Sodium 50mg	2%
Total Carbohydrate 20g	7%
Dietary Fiber 3g	11%
Total Sugars 3g	
Includes 3g Added Sugars	6%
Protein 8g	

Available on Amazon & some local grocery stores

Available on Amazon



Nutrition Facts

5 servings per container
Serving size 2/3 cup (60g)

	Per 2/3 cup (60g) bowl serving	% DV*	Per 1/3 cup (30g) snack serving	% DV*
Calories	280		140	
Total Fat	22g	29%	11g	14%
Saturated Fat	5g	27%	2.5g	13%
Trans Fat	0g		0g	
Polyunsaturated Fat	6g		3g	
Monounsaturated Fat	9g		4.5g	
Cholesterol	0mg	0%	0mg	0%
Sodium	140mg	6%	70mg	3%
Total Carbohydrates	19g	7%	9g	3%
Dietary Fiber	4g	14%	2g	7%
Total Sugars	3g		1g	
Inc. Added Sugars	2g	3%	1g	2%
Sugar Alcohol	6g		3g	
Protein	14g		7g	



Nutrition Facts

15 serving per container
Serving size 1/2 Cup (37g)

Amount per serving
Calories

Total Fat 4.5g
Saturated Fat 1g
Trans Fat 0g
Cholesterol 0mg
Sodium 130mg
Total Carbohydrate 14g
Dietary Fiber 12g
Total Sugars 0g
Includes 0g Added Sugars
Protein 12g

Available at your local grocery store

Available on Amazon



Nutrition Facts

20 servings per container
Serving size 1/8 cup (28g)

Amount Per Serving	Calories	180
% Daily Value*		
Total Fat 15g		19%
Saturated Fat 2.5g		13%
Trans Fat 0g		
Cholesterol 0mg		0%
Sodium 10mg		0%
Total Carbohydrate 9g		3%
Dietary Fiber 3g		11%
Total Sugars 4g		
Includes 3g Added Sugars		6%
Protein 5g		
Vitamin D 0mcg		0%
Calcium 40mg		2%
Iron 1.2mg		6%
Potassium 150mg		4%

*The % Daily Value (DV) tells you how much a nutrient in a serving of food contributes to a daily diet. 2,000 calories a day is used for general nutrition advice.

Available at Whole Foods



Nutrition Facts

10 servings per container
Serving size 1/4 Cup (26g)

Amount Per Serving	Calories	150
% Daily Value*		
Total Fat 12g		15%
Saturated Fat 1g		5%
Trans Fat 0g		
Cholesterol 0mg		0%
Sodium 170mg		7%
Total Carbohydrate 5g		2%
Dietary Fiber 4g		14%
Total Sugars <1g		
Includes 0g Added Sugars		0%
Protein 6g		
Vitamin D 0mcg		0%
Calcium 70mg		6%
Iron 1.4mg		8%
Potassium 0mg		0%

*The % Daily Value (DV) tells you how much a nutrient in a serving of food contributes to a daily diet. 2,000 calories a day is used for general nutrition advice.

Available on Amazon



NUTRITION FACTS

Serving Size 1 pouch (50g)
Servings Per Container 4

Amount Per Serving	Calories 285	Calories from Fat 215
% Daily Values*		
Total Fat 24g		37%
Saturated Fat 10g		50%
Trans Fat 0g		
Polyunsaturated Fat 7g		
Monounsaturated Fat 5g		
Cholesterol 0mg		0%
Sodium 13mg		1%
Total Carbohydrate 15g		5%
Dietary Fiber 8g		32%
Sugars 4g		
Protein 6g		12%

Available at Amazon, Walmart



Nutrition Facts
About 26 servings per container
Serving size About 1 Scoop (28g)

Amount per serving		
Calories	100	
		% Daily Value*
Total Fat 0.5g		0%
Saturated Fat 0g		0%
Trans Fat 0g		
Cholesterol 15mg		5%
Sodium 115mg		5%
Total Carbohydrate <1g		0%
Dietary Fiber 0g		0%
Total Sugars 0g		
Includes 0g Added Sugars		0%
Protein 23g		46%
Vit. D 0mcg 0% • Calcium 290mg 20%		
Iron 0.1mg 0% • Potassium 80mg 2%		

*The % Daily Value (DV) tells you how much a nutrient in a serving of food contributes to a daily diet. 2,000 calories a day is used for general nutrition advice.

Available at GNC & The Vitamin Shoppe



Nutrition Facts
Serving Size 35 g
Servings Per Container 8

Amount Per Serving		
		% Daily Values*
Total Fat 11		14%
Saturated Fat 2.0g		11.0%
Trans Fat 0.0g		
Cholesterol 120.0mg		40.0%
Sodium 350.0mg		15.0%
Total Carbohydrates 10		4%
Dietary Fiber 5.0g		18.0%
Sugars 0.0g		
Protein 9.0g		
Calcium 20.0%	Iron	10.0%

*Percent Daily Values are based on a 2,000 calorie diet. Your daily values may be higher or lower depending on your calorie needs.

Available most local grocery stores



Nutrition Facts
4 servings per container
Serving size 1 bagel (88g)

Amount per serving		
Calories	240	
		% Daily Value*
Total Fat 14g		19%
Saturated Fat 2g		10%
Trans Fat 0g		
Polyunsaturated Fat 3g		
Monounsaturated Fat 9g		
Cholesterol 0mg		0%
Sodium 640mg		28%
Total Carbohydrates 28g		10%
Dietary Fiber 19g		67%
Total Sugars <1g		
Includes 0g Added Sugars		0%
Sugar Alcohol 2g		
Protein 18g		10%

Available at www.solasweet.com



NUTRITION FACTS
Approx. 28 Servings per Container
Serving Size: 1 Rounded Scoop (35 grams)

Amount Per Serving		
CALORIES	120	
		%Daily Value**
Total Fat 2g		3%
Saturated Fat 0g		0%
Trans Fat 0g		
Cholesterol 0mg		0%
Sodium 390mg		17%
Total Carbohydrate 7g		3%
Dietary Fiber 1g		4%
Total Sugars 1g		
Includes 0g Added Sugars		0%
Protein 20g		40%

Available at GNC



Nutrition Facts
3 servings per container
Serving size 2 waffles (56g)

Amount per serving		
Calories	180	
		% Daily Value*
Total Fat 14g		18%
Saturated Fat 3g		15%
Trans Fat 0g		
Cholesterol 100mg		33%
Sodium 170mg		7%
Total Carbohydrate 11g		4%
Dietary Fiber 3g		10%
Total Sugars 2g		
Includes 0g Added Sugars		0%
Sugar Alcohol 2g		
Protein 5g		
Vitamin D 0mcg		0%
Calcium 136mg		10%
Iron 2mg		8%
Potassium 187mg		4%

*The % Daily Values (DV) tells you how much a nutrient in a serving contributes to a daily diet. 2000 calories a day is used for general nutrition advice.

Available at local grocery stores



Serving Per Container: 1
Amount Amount Per Serving:

Calories: 100

Total Fat 3g

Saturated Fat 1.5g

Trans Fat 0g

Cholesterol 15mg

Sodium 390mg

Total Carbohydrate 4g

Dietary Fiber 0g

Sugars 3g

Added Sugars 0g

Protein 15g



Serving Size: 1 cup
Serving Per Container: 1
Amount :

Calories: 80

Total Fat 2g

Saturated Fat 1g

Trans Fat 0g

Cholesterol 5mg

Sodium 35mg

Total Carbohydrate 3g

Dietary Fiber 0g

Sugars 2g

Added Sugars 0g

Protein 12g

Nutrition Facts

Serving Size 1 Container (150g)
Servings Per Package 4

Amount Per Serving		% Daily Value*
Calories 110	Calories from Fat 0	
Total Fat 0g		0%
Saturated Fat 0g		0%
Trans Fat 0g		
Cholesterol <5mg		1%
Sodium 65mg		3%
Potassium 210mg		6%
Total Carbohydrate 13g		4%
Dietary Fiber 6g		24%
Sugars 6g		
Protein 15g		30%



Serving Per Container: 1
Amount Amount per serving:
Calories: 170

Total Fat 4g

Saturated Fat 1.5g

Trans Fat 0g

Cholesterol 15mg

Sodium 190mg

Total Carbohydrate 9g

Dietary Fiber 0g

Sugars 3g

Added Sugars 0g

Sugar Alcohol 2g

Protein 25g

Serving Size: 1 Container
Amount Amount per serving:

Calories: 60

Total Fat 0g

Saturated Fat 0g

Trans Fat 0g

Cholesterol 10mg

Sodium 65mg

Total Carbohydrate 5g

Dietary Fiber 1g

Sugars 0g

Added Sugars 0g

Protein 11g



Available at most local grocery stores



Nutrition Facts

Serving Size 130.00 g	
Servings Per Container 1	
Amount Per Serving	
Calories 290	
	% Daily Value
Total Fat 21g	32%
Saturated Fat 11g	55%
Trans Fat 0g	
Cholesterol 240mg	80%
Sodium 310mg	13%
Total Carbohydrate 2g	1%
Dietary Fiber 1g	4%
Sugars 1g	
Protein 16g	



Nutrition Facts

Serving Size 1 Egg'Wich (99g)
Servings Per Container 1

Calories 160.00
Total Fat 10.00 g
Saturated Fat 3.50 g
Trans Fat 0.00 g
Cholesterol 225.00 mg
Sodium 360.00 mg
Total Carbohydrate 3.00 g
Dietary Fiber 0.00 g
Protein 15.00 g

Nutrition facts

Refer to the product label for full dietary information,

4 servings per container

Serving Size

Amount per serving

Calories

Total Fat 22g

Saturated Fat 10g

Trans Fat 0g

Cholesterol 170.00mg

Sodium 620mg

Total Carbohydrate 7g

Dietary Fiber 4g

Sugars 2g

Includes Added Sugars 0g

Protein 19g

Nutrition facts

Refer to the product label for full dietary info

4.0 servings per container

Serving Size

Amount per serving

Calories

Total Fat 19g

Saturated Fat 7g

Trans Fat 0g

Cholesterol 175mg

Sodium 780mg

Total Carbohydrate 8g

Dietary Fiber 1g

Sugars 4g

Includes Added Sugars 3g

Protein 14g



Available at most local grocery stores



Serving Size: 11 g
 Serving Per Container: ABOUT 10
 Amount Per Serving

Calories: 30

Calcium

Calories From Fat 20Cal

Cholesterol 5mg

Dietary Fiber 0g

Iron

Protein 2g

Saturated Fat 1g

Sodium 230mg

Sugars 0g

Total Carbohydrate 0g

Total Fat 2g



Nutrition Facts	Amount/Serving	%Daily Value*	Amount/Serving	%Daily Value*
	Serving Size 2 cooked links(40g) Servings Per Container 6 Calories 100 Calories From Fat 70 *Percent Daily Values are based on a 2,000 calorie diet.	Total Fat 8g	12%	Total Carbohydrate 0g
	Saturated Fat 3g	15%	Dietary Fiber 0g	0%
	Cholesterol 25mg	9%	Sugars 0g	
	Sodium 230mg	10%	Protein 7g	
	Vitamin A 0% • Vitamin C 0% • Calcium 0% • Iron 2%			



Nutrition Facts

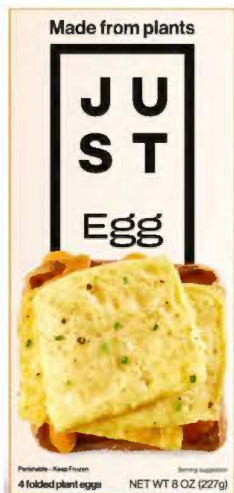
6 servings per container

Serving size 1 patty (33g)

Amount per serving
Calories 50

% Daily Value*

Total Fat 3g	4%
Saturated Fat 1g	5%
Trans Fat 0g	
Cholesterol 25mg	8%
Sodium 250mg	11%
Total Carbohydrate 0g	0%
Dietary Fiber 0g	0%
Total Sugars 0g	
Includes 0g Added Sugars	0%
Protein 6g	



Nutrition Facts

about 4 servings per container
 Serving size 1 Piece (57g)

Amount per serving
Calories 100

% Daily Value*

Total Fat 7g	9%
Saturated Fat 0.5g	3%
Trans Fat 0g	
Polyunsaturated Fat 2g	
Monounsaturated Fat 4.5g	
Cholesterol 0mg	0%
Sodium 300mg	13%
Total Carbohydrate 3g	1%
Dietary Fiber 0g	0%
Total Sugars 0g	
Includes 0g Added Sugars	0%
Protein 7g	



Nutrition facts

Refer to the product label for full dietary informa

3 servings per container

Serving Size

Amount per serving

Calories

Total Fat 12.00000g
Saturated Fat 4.5g
Trans Fat 0g
Cholesterol 0mg
Sodium 270mg
Total Carbohydrate 6.00000g
Dietary Fiber 2g
Sugars 0g
Includes Added Sugars 0g
Protein 11.00000g

Available at most local grocery stores



Nutrition Facts	
Serving Size 1 bottle (12 fl oz)	
Amount Per Serving	
Calories 170	Calories from Fat 80
% Daily Value*	
Total Fat 9g	12%
Saturated Fat 8g	35%
Sodium 100mg	4%
Total Carbohydrates 8g	5%
Dietary Fiber 1g	4%
Sugars 4g	
Protein 12g	17%



Nutrition Facts	
Serving Size: 1 Bottle (340g)	
Servings Per Container: 1	
Amount Per Serving	
Calories 80	Calories from Fat 45
% Daily Value*	
Total Fat 5g	8%
Saturated Fat 5g	25%
Trans Fat 0g	
Cholesterol 0mg	0%
Sodium 20mg	1%
Total Carbohydrate 1g	0%
Dietary Fiber 0g	0%
Sugars 0g	
Protein 10g	



Nutrition Facts	
Serv. Size: 1 can (6 fl.oz.),	
Amount Per Serving:	
Calories 35	Total Fat 1g (1% DV), Sat. Fat 1g (5% DV), Trans Fat 0g (0% DV), Cholest. 5mg (2% DV), Sodium 5mg (0% DV), Total Carb. 1g (0% DV), Fiber 0g (0% DV), Total Sugars 0g (Incl. 0g Added Sugars, 0% DV), Protein 5g (10% DV), Vit. D 0mcg (0%

Available on Amazon & most grocery stores



NUTRITION FACTS	
Approx. 15 Servings per Container	
Serving Size: 1 Rounded Scoop (35.5 grams)	
Amount Per Serving	
CALORIES	130
% Daily Value**	
Total Fat 2g	3%
Saturated Fat 0.5g	3%
Trans Fat 0g	
Cholesterol 10mg	3%
Sodium 250mg	11%
Total Carbohydrate 7g	3%
Dietary Fiber 2g	7%
Total Sugars 3g	
Includes 3g Added Sugars	6%
Protein 20g	40%

Available at GNC & Amazon



Nutrition Facts	
7 servings per container	
Serving size 1 Packet (23.5g)	
Amount Per Serving	
Calories	80
% Daily Value	
Total Fat 1g	1%
Saturated Fat 0.5g	3%
Trans Fat 0g	
Cholesterol 0mg	0%
Sodium 220mg	10%
Total Carbohydrate 3g	1%
Dietary Fiber 1g	4%
Total Sugars 2g	
Includes 0g Added Sugars	0%
Protein 15g	30%

Available at www.wholesomeprovisions.com



Nutrition Facts

4 servings per container
Serving size 16.9 fl oz (500mL)

Amount per serving	
Calories	90
	% Daily Value*
Total Fat 0g	0%
Saturated Fat 0g	0%
Trans Fat 0g	
Cholesterol 0mg	0%
Sodium 160mg	7%
Total Carbohydrate 1g	0%
Dietary Fiber 0g	0%
Total Sugars 0g	
Includes 0g Added Sugars	0%
Protein 20g	40%
Vit. D 0mcg 0%	• Calcium 0mg 0%
Iron 0mg 0%	• Potas. 0mg 0%

*The % Daily Value (DV) tells you how much a nutrient in a serving of food contributes to a daily diet. 2,000 calories a day is used for general nutrition advice.



0% JUICE

Nutrition Facts

Serv. size 1 bottle

Amount per serving	
Calories	60
	% Daily Value
Total Fat 0g	0%
Sat. Fat 0g	0%
Trans Fat 0g	
Sodium 110mg	5%
Total Carb. 0g	0%
Protein 15g	30%

Not a significant source of cholest., fiber, total sugars, added sugars, vit. D, calcium, iron, and potas.

INGREDIENTS: WATER, WHEY PROTEIN ISOLATE (MILK), NATURAL FLAVORS, SUCRALOSE, RED 40, BLUE 1.

Made Exclusively For Protein2O Inc. Chicago, IL

SHAKE WELL. SETTling IS NATURAL. BEST SERVED CHILLED. REFRIGERATE AFTER OPENING.

NOTICE: USE THIS PRODUCT AS A FOOD SUPPLEMENT ONLY. DO NOT USE FOR WEIGHT REDUCTION.

WHEY PROTEIN HAS SHOWN POSITIVE EFFECTS IN:

- MUSCLE BUILDING IN ASSOCIATION WITH RESISTANCE TRAINING
- BOOSTING ENERGY BEFORE EXERCISE
- REDUCING APPETITE

GLUTEN FREE
LACTOSE FREE
KOSHER
PET 1 (BPA FREE)

Available at most grocery stores



Nutrition Facts

Serving size 1 Bottle

Amount per serving	
Calories	60
	% Daily Value
Total Fat 0g	0%
Sodium 30mg	1%
Total Carbohydrate 4g	1%
Total Sugars 3g	
Includes 0g Added Sugars	0%
Protein 10g	



Available at www.vitalproteins.com



Nutrition Facts	
4 servings per container	
Serving size 1 shake (325 mL)	
Amount per serving	
Calories 160	
% Daily Value*	
Total Fat 3g	4%
Saturated Fat 0g	0%
Trans Fat 0g	
Cholesterol 20mg	7%
Sodium 390mg	17%
Total Carb. 3g	1%
Dietary Fiber 0g	0%
Total Sugars 1g	
Incl. 0g Added Sugars	0%
Protein 30g	60%



Nutrition Facts

Serving Size 11 fl. oz. (330mL)
Servings per Container 1

Calories 100
Total Fat 1.5g
Saturated Fat 0.5g
Trans Fat 0g
Polyunsaturated Fat 0g
Monounsaturated Fat 0g
Cholesterol 10mg
Sodium 190mg
Potassium 610mg
Total Carbohydrate 5g
Dietary Fiber 4g
Sugars 0g
Protein 20g



Nutrition Facts	
Serving size 1 Shake (325 mL)	
Amount per serving	
Calories 160	
% Daily Value*	
Total Fat 9g	12%
Saturated Fat 2g	10%
Trans Fat 0g	
Polyunsaturated Fat 0.5g	
Monounsaturated Fat 6g	
Cholesterol 10mg	3%
Sodium 200mg	9%
Total Carbohydrate 7g	3%
Dietary Fiber 5g	18%
Total Sugars 1g	
Includes 0g Added Sugars	0%
Protein 15g	30%



Nutrition Facts

1 serving per container
Serving size 1 Bottle (340mL)

Amount per serving	
Calories 150	
% Daily Value*	
Total Fat 2.5g	3%
Saturated Fat 1.5g	8%
Cholesterol 10mg	3%
Sodium 230mg	10%
Total Carbohydrate 4g	1%
Dietary Fiber 1g	4%
Total Sugars 2g	
Includes 0g Added Sugars	0%
Protein 30g	60%

Available at most grocery stores



Nutrition Facts

1 serving per container
Serving Size 1 Bottle (340mL)

Amount per serving		% Daily Value*
Calories	140	
Total Fat 3g		4%
Saturated Fat 0.5g		3%
Trans Fat 0g		
Cholesterol 15mg		5%
Sodium 30mg		1%
Total Carbohydrate 9g		3%
Dietary Fiber 4g		14%
Total Sugars 1g		
Includes 0g Added Sugars		0%
Protein 20g		36%



Nutrition Facts

1 servings per container
Serving size 11 FL OZ(325ml)

Amount per serving		% Daily Value*
Calories	130	
Total Fat 5g		6%
Saturated Fat 0.5g		3%
TransFat 0g		
Polyunsaturated Fat 1.5g		
Monounsaturated Fat 3g		
Cholesterol 0mg		0%
Sodium 280mg		12%
Total Carbohydrate 6g		2%
Dietary Fiber 1g		4%
Total Sugars 0g		
Includes 0g Added Sugars		0%
Protein 15g		24%



Nutrition Facts

12 servings per container
Serving size 1 Carton (11 FL OZ)

Amount per serving		% Daily Value*
Calories	150	
Total Fat 4.5g		6%
Saturated Fat 1g		8%
Trans Fat 0g		
Cholesterol 0mg		0%
Sodium 450mg		20%
Total Carbohydrate 9g		3%
Dietary Fiber 1g		4%
Total Sugars 1g		
Includes 0g Added Sugars		0%
Protein 20g		28%



Nutrition Facts

4 serving per container
Serving size 11 fl oz (330mL)

Amount per serving		% Daily Value*
Calories	150	
Total Fat 2.5g		3%
Saturated Fat 1g		5%
Trans Fat 0g		
Cholesterol 0mg		0%
Sodium 360mg		16%
Total Carbohydrate 18g		7%
Dietary Fiber 1g		4%
Total Sugars 4g		
Includes 4g Added Sugars		8%
Protein 20g		32%



Nutrition Facts

1 serving per container
Serving size 12 fl oz (355mL)

Amount per serving		% Daily Value*
Calories	180	
Total Fat 7g		10%
Saturated Fat 1g		5%
Trans Fat 0g		
Cholesterol 0mg		0%
Sodium 270mg		11%
Total Carb 10g		3%
Dietary Fiber 5g		20%
Total Sugars 4g		
Inc. 4g Added Sugars		8%
Protein 20g		

Available at Central Market & some grocery stores

Nutrition Facts

12 Servings Per Container
Serving Size 1 Bar (45g)

Amount Per Serving
Calories 220

	% Daily Value*
Total Fat 14g	18%
Saturated Fat 6g	30%
Trans Fat 0g	
Cholesterol 0mg	0%
Sodium 120mg	5%
Total Carbohydrate 14g	5%
Dietary Fiber 5g	18%
Total Sugars 2g	
Includes 0g Added Sugars	0%
Protein 12g	12%

Nutrition Facts

12 servings per container
Serving size 1 bar (31g)

Amount Per Serving
Calories 170

	% Daily Value*
Total Fat 13g	17%
Saturated Fat 9g	45%
Trans Fat 0g	
Cholesterol 0mg	0%
Sodium 100mg	4%
Total Carbohydrate 7g	3%
Dietary Fiber 3g	11%
Total Sugars 1g	
Includes <1g Added Sugars	0%
Sugar Alcohol 2g	
Protein 10g	20%



Calories: 160

Total Fat 7g

Saturated Fat 6g

Trans Fat 0g

Cholesterol 10mg

Sodium 140mg

Total Carbohydrate 30g

Dietary Fiber 10g

Sugars 1g

Added Sugars 0g

Erythritol 4g

Protein 16g

Nutrition Facts

12 servings per container
Serving size 1 bar (60g)

Amount per serving
Calories 190

	% Daily Value*
Total Fat 4.5g	6%
Saturated Fat 2g	10%
Trans Fat 0g	
Cholesterol 0mg	0%
Sodium 160mg	7%
Total Carbohydrate 25g	9%
Dietary Fiber 16g	57%
Total Sugars 1g	
Includes 0g Added Sugars	
Sugar Alcohol 5g	
Protein 8g	



Nutrition Facts

12 servings per container
Serving size 1 bar (60g)

Amount per serving
Calories 220

	% Daily Value*
Total Fat 9g	12%
Saturated Fat 5g	25%
Trans Fat 0g	
Polyunsaturated Fat 1g	
Monounsaturated Fat 2.5g	
Cholesterol 10mg	3%
Sodium 140mg	6%
Total Carbohydrate 23g	8%
Dietary Fiber 6g	25%
Soluble Fiber 6g	
Insoluble Fiber 2g	
Total Sugars 1g	
Includes 0g Added Sugars	0%
Sugar Alcohol 5g	
Protein 20g	38%



Available on Amazon & most grocery stores

NUTRITION FACTS

Serving Size: 1 bar (41g)
Servings Per Container: 16 servings

Amount Per Serving

Calories

Total Fat 17g
Saturate Fat 5g
Trans Fat 0g
Cholesterol 0mg
Sodium 170mg
Total Carbohydrate 9g
Dietary Fiber 3g
Total Sugars 1g
Added Sugars 0g
Sugar Alcohol 4g
Protein 12g



Nutrition Facts

Serving Size 1 Bar (48g)

Amount Per Serving

Calories 200 Fat Calories 80

% Daily Value

Total Fat 9g 14%

Saturated Fat 4g 20%

Trans Fat 0g

Polyunsaturated Fat 1g

Monounsaturated Fat 3.5g

Cholesterol 0mg 0%

Sodium 200mg 8%

Potassium 80mg 2%

Total Carbohydrate 21g 7%

Dietary Fiber 9g 36%

Sugars 3g

Glycerin 8g

Protein 14g 21%



Nutrition Facts

1 Serving per container Serving size 1 bar (40g)

Amount per serving
Calories 210

Amount per serving	% Daily Value*	Amount per serving	% Daily Value*
Total Fat 5g	10%	Total Carbohydrate 11g	4%
Saturated Fat 5g	25%	Dietary Fiber 0g	21%
Trans Fat 0g		Total Sugars 3g	
Cholesterol 0mg	0%	Includes 0g Added Sugar	0%
Sodium 30mg	2%	Protein 9g	

Available at most grocery stores

Lunch

Nutrition Facts

Serving Size 4 oz
Servings Per Container About 2

Amount Per Serving		% Daily Values*	
Calories	250.0	Calories from Fat	140.0
Total Fat	17g		26%
Saturated Fat	4.0g		20.0%
Trans Fat	0.0g		
Cholesterol	0.0mg		0.0%
Sodium	390.0mg		16.0%
Total Carbohydrates	5g		2%
Dietary Fiber	1.0g		4.0%
Sugars	0.0g		
Protein	20.0g		

Nutrition Facts

About 2.5 servings per container
Serving size 3 oz. (84g)

	Per serving	% DV*	Per container	% DV*
Calories	120		320	
Total Fat	2.5g	3%	7g	9%
Saturated Fat	1g	5%	2g	10%
Trans Fat	0g		0g	
Cholesterol	70mg	23%	185mg	62%
Sodium	400mg	17%	1060g	46%
Total Carb.	1g	0%	3g	1%
Dietary Fiber	0g	0%	0g	0%
Total Sugars	1g		1g	
Incl Added Sugars	1g	2%	1g	2%
Protein	23g		61g	
Vitamin D	0mcg	0%	0mcg	0%
Calcium	7mg	0%	17mg	2%
Iron	0mg	0%	1mg	6%
Potassium	283mg	6%	756mg	15%



Nutrition Facts

1 serving per container
Serving size 1 Package (284g)

Amount per serving		% Daily Value*	
Calories	460		
Total Fat	39g		50%
Saturated Fat	6g		31%
Trans Fat	0g		
Cholesterol	50mg		17%
Sodium	810mg		35%
Total Carbohydrate	10g		4%
Dietary Fiber	5g		17%
Total Sugars	4g		
Includes 0g Added Sugars			0%
Protein	18g		31%

1 serving per container
Serving size 1 meal (269g)

Amount per serving		% Daily Value*	
Calories	180		
Total Fat	7g		9%
Saturated Fat	2g		10%
Trans Fat	0g		
Polyunsaturated Fat	1g		
Monounsaturated Fat	3.5g		
Cholesterol	70mg		23%
Sodium	540mg		23%
Total Carbohydrate	10g		4%
Dietary Fiber	5g		18%
Total Sugars	4g		
Includes 0g Added Sugars			0%
Protein	18g		22%



Nutrition Facts

Serving Size: 1 link (85g)
Servings: 4
Calories 160
Calories From Fat 90

Amount Per Serving	% DV*	Amount Per Serving	% DV*
Total Fat 10g	15%	Total Carbohydrate 1g	0%
Saturated Fat 1.5g	8%	Dietary Fiber 1g	4%
Trans Fat 0g		Sugars 0g	
Cholesterol 70mg	23%	Protein 12g	

Available at most grocery stores



Nutrition Facts
Serving Size 1 cup (240g)
Servings Per Container 2

Amount Per Serving	
Calories 45 Calories from Fat 0	
	% Daily Value*
Total Fat 0g	0%
Saturated Fat 0g	0%
Cholesterol <5mg	1%
Sodium 560mg	23%
Potassium 115mg	3%
Total Carbohydrate 1g	0%
Dietary Fiber 0g	0%
Sugars 2g	
Protein 10g	4%



Nutrition Facts
10 servings per container
Serving size 1 stick pack (16g)

Amount per serving	
Calories 50	
	% Daily Value*
Total Fat 0g	0%
Saturated Fat 0g	0%
Trans Fat 0g	
Cholesterol 0mg	0%
Sodium 700mg	29%
Total Carbohydrate 3g	1%
Dietary Fiber 0g	0%
Total Sugars 0g	
Includes 0g Added Sugars	0%
Protein 10g	20%



Nutrition Facts

	Amount/serving	% DV*	Amount/serving
Total Fat	15g	19%	Total Carb. 0g
Sat. Fat	12g	60%	Fiber 0g
Trans Fat	0g		Total Sugars 0g
Cholest.	20mg	7%	Incl. 0g Added Sugars
Sodium	260mg	11%	Protein 10g

Serv. size 1 package
Calories per serving 150



Supplement Facts

Serving Size 1 Packet (10 g)
Servings Per Container About 20

	Amount Per Serving	% Daily Value
Calories	40	
Protein	9 g	
Sodium	70 mg	3%
Collagen	9 g	**
Chondroitin sulfate	390 mg	**
Hyaluronic acid	50 mg	**

*Daily Value not established.

Available on Amazon and most grocery stores

Grab & Go



Nutrition Facts

1 serving per bag	
Serving size	1 oz (28g)
Amount per Serving	
Calories	150
% Daily Value*	
Total Fat 10g	13%
Saturated Fat 1g	5%
Trans Fat 0g	
Polyunsaturated Fat 1g	
Monounsaturated Fat 7g	
Cholesterol 0mg	0%
Sodium 190mg	8%
Total Carbohydrate 5g	2%
Dietary Fiber 2g	7%
Total Sugars 1g	
Includes 0g Added Sugars	0%
Protein 9g	17%



Nutrition Facts

12 servings per container	
Serving size	2 cups (42g)
Amount per serving	
Calories	190
% Daily Value*	
Total Fat 15g	19%
Saturated Fat 9g	45%
Trans Fat 0g	
Cholesterol 0mg	0%
Sodium 125mg	5%
Total Carbohydrate 13g	5%
Dietary Fiber 4g	14%
Total Sugars <1g	
Includes 0g Added Sugars	0%
Erythritol 8g	
Protein 11g	22%



Nutrition Facts

Serving Size 1 BG	
Servings Per Container 1	
Amount Per Serving	
Calories	140
% Daily Value*	
Total Fat 5g	
Saturated Fat 0g	
Trans Fat 0g	
Cholesterol 10mg	
Sodium 340mg	
Total Carbohydrate 5g	
Dietary Fiber 1g	
Protein 19g	



Calories:	250
Added Sugars	0g
Calcium	150mg
Cholesterol	30mg
Dietary Fiber	9g
ERYTHRITOL	6g
Iron	0.4mg
Potassium	100mg
Protein	15g
Saturated Fat	10g
Sodium	220mg
Total Carbohydrate	19g
Total Fat	17g
Total Sugars	1g

Available on Amazon and most grocery stores



Nutrition Facts

2,000 Servings Per Container (Santa Catarina Tuna Filet in Oregano & Oil, 4 ct)
Serving Size 2.10 Oz(60g)

Amount Per Serving	% Daily Value*
Calories 106	
Total Fat 9g	14%
Saturated Fat 0.3g	
Trans Fat 0g	
Cholesterol 6mg	
Sodium 270mg	11%
Total Carbohydrates 0g	0%
Dietary Fiber 0g	0%
Total Sugars 0g	
Protein 16g	



Calories 120

Calories from Fat 70

% DV*	Amount
11%	Total Fat 7g
8%	Saturated Fat 1.5g
	Trans Fat 0g
7%	Cholesterol 20mg
5%	Sodium 120mg
0%	Total Carbohydrates 0g
0%	Dietary Fiber 0g
	Sugars 0g
	Protein 13g



Nutrition Facts

Serv. Size: 1 Pouch (74g)
 Servings Per Container 1

Amount Per Serving	% Daily Values*
Calories 70	
Calories from Fat 10	
Total Fat 1g	2%
Saturated Fat 0.5g	3%
Trans Fat 0g	
Polyunsaturated Fat 0g	
Monounsaturated Fat 0g	
Cholesterol 35mg	10%
Sodium 620mg	26%
Potassium 190mg	5%
Total Carbohydrate 0g	0%
Fiber 0g	0%
Protein 15g	27%



Nutrition Facts	Amount/serving	% DV	Amount/serving	% DV	Amount/serving	% DV
	Total Fat 6g	8%	Monounsat. Fat 4.5g		Dietary Fiber 0g	0%
Saturated Fat 1g	5%	Cholesterol 40mg	13%	Total Sugars 0g		
Trans Fat 0g		Sodium 240mg	10%	Inc. of Added Sugars 0%		
1 Serving Per Container		Polyunsat. Fat 0g		Total Carb 0g	0%	
Serv Size 1 container (80g)				Protein 22g	40%	
Calories 140	per serving					
Vitamin D 0mcg 0% • Calcium 6mg 0% • Iron 1mg 6% • Potassium 250mg 6% *The % Daily Value tells you how much a nutrient in a serving of food contributes to a daily diet. 2,000 calories a day is used for general nutrition advice.						



Nutrition Facts

Serv. Size 1 bar (43g)
 Servings 1
Calories 200
 Fat Cal. 110

Amount/Serving	%DV*	Amount/Serving	%DV*
Total Fat 12g	19%	Total Carb. 10g	3%
Sat. Fat 5g	25%	Fiber 1g	4%
Cholest. 30mg	9%	Sugars 8g	
Sodium 220mg	9%	Protein 11g	

*Percent Daily Values (DV) are based on a 2,000 calorie diet.

Vitamin A 0% • Vitamin C 0% • Calcium 0% • Iron 6% • Niacin 25% • Vitamin B12 20%

INGREDIENTS: Organic Bison, Uncured Bacon (Pork, Brown Sugar, Vinegar), Dried Cranberries (Cranberries, Apple Juice Concentrate), Lactic Acid*, Celery Powder, Sea Salt.

**Not from dairy.

Available on Amazon and most grocery stores



Nutrition Facts	
4 servings per container	
Serving size 1 shake (325 mL)	
Amount per serving	
Calories 160	
% Daily Value*	
Total Fat 3g	4%
Saturated Fat 0g	0%
Trans Fat 0g	
Cholesterol 20mg	7%
Sodium 390mg	17%
Total Carb. 3g	1%
Dietary Fiber 0g	0%
Total Sugars 1g	
Incl. 0g Added Sugars	0%
Protein 30g	60%



Nutrition Facts	
Serving Size 11 fl. oz. (330mL)	
Servings per Container 1	
Calories 100	
% Daily Value*	
Total Fat 1.5g	
Saturated Fat 0.5g	
Trans Fat 0g	
Polyunsaturated Fat 0g	
Monounsaturated Fat 0g	
Cholesterol 10mg	
Sodium 190mg	
Potassium 610mg	
Total Carbohydrate 5g	
Dietary Fiber 4g	
Sugars 0g	
Protein 20g	



Nutrition Facts	
Serving size 1 Shake (325 mL)	
Amount per serving	
Calories 160	
% Daily Value*	
Total Fat 9g	12%
Saturated Fat 2g	10%
Trans Fat 0g	
Polyunsaturated Fat 0.5g	
Monounsaturated Fat 6g	
Cholesterol 10mg	3%
Sodium 200mg	9%
Total Carbohydrate 7g	3%
Dietary Fiber 5g	18%
Total Sugars 1g	
Includes 0g Added Sugars	0%
Protein 15g	30%



COLD-BREW

Nutrition Facts	
Serving Size 1 bottle (12 fl oz)	
Amount Per Serving	
Calories 170	Calories from Fat 80
% Daily Value*	
Total Fat 9g	12%
Saturated Fat 8g	35%
Sodium 100mg	4%
Total Carbohydrates 8g	6%
Dietary Fiber 1g	4%
Sugars 4g	
Protein 12g	17%
Calcium 15%	Iron 15%
Not a significant source of trans fat, cholesterol, vitamin A or vitamin C	
* Percent daily value based on a 2,000 calorie diet	



Nutrition Facts	
Serving Size: 1 Bottle (340g)	
Servings Per Container: 1	
Amount Per Serving	
Calories 80	Calories from Fat 45
% Daily Value*	
Total Fat 5g	8%
Saturated Fat 5g	25%
Trans Fat 0g	
Cholesterol 0mg	0%
Sodium 20mg	1%
Total Carbohydrate 1g	0%
Dietary Fiber 0g	0%
Sugars 0g	
Protein 10g	
Vitamin A 0%	Vitamin C 0%
Calcium 4%	Iron 0%
* Percent Daily Values are based on a 2,000 calorie diet.	

Available on Amazon and most grocery stores



Nutrition Facts

1 serving per container
Serving Size 1 Bottle (340mL)

Amount per serving		% Daily Value*
Calories	140	
Total Fat 3g		4%
Saturated Fat 0.5g		3%
Trans Fat 0g		
Cholesterol 15mg		5%
Sodium 30mg		1%
Total Carbohydrate 9g		3%
Dietary Fiber 4g		14%
Total Sugars 1g		
Includes 0g Added Sugars		0%
Protein 20g		36%



Nutrition Facts

1 servings per container
Serving size 11 FL OZ(325ml)

Amount per serving		% Daily Value*
Calories	130	
Total Fat 5g		6%
Saturated Fat 0.5g		3%
TransFat 0g		
Polyunsaturated Fat 1.5g		
Monounsaturated Fat 3g		
Cholesterol 0mg		0%
Sodium 280mg		12%
Total Carbohydrate 6g		2%
Dietary Fiber 1g		4%
Total Sugars 0g		
Includes 0g Added Sugars		0%
Protein 15g		24%



Nutrition Facts

12 servings per container
Serving size 1 Carton (11 FL OZ)

Amount per serving		% Daily Value*
Calories	150	
Total Fat 4.5g		6%
Saturated Fat 1g		8%
Trans Fat 0g		
Cholesterol 0mg		0%
Sodium 450mg		20%
Total Carbohydrate 9g		3%
Dietary Fiber 1g		4%
Total Sugars 1g		
Includes 0g Added Sugars		0%
Protein 20g		28%



Nutrition Facts

4 serving per container
Serving size 11 fl oz (330mL)

Amount per serving		% Daily Value*
Calories	150	
Total Fat 2.5g		3%
Saturated Fat 1g		5%
Trans Fat 0g		
Cholesterol 0mg		0%
Sodium 360mg		16%
Total Carbohydrate 18g		7%
Dietary Fiber 1g		4%
Total Sugars 4g		
Includes 4g Added Sugars		8%
Protein 20g		32%



Nutrition Facts

1 serving per container
Serving size 12 fl oz (355mL)

Amount per serving		% Daily Value*
Calories	180	
Total Fat 7g		10%
Saturated Fat 1g		5%
Trans Fat 0g		
Cholesterol 0mg		0%
Sodium 270mg		11%
Total Carb 10g		3%
Dietary Fiber 5g		20%
Total Sugars 4g		
Inc. 4g Added Sugars		8%
Protein 20g		

Available on Amazon and most grocery stores



Nutrition Facts	
Serving Size 1 package	
Amount Per Serving	
Calories 180	Calories from Fat 120
% Daily Value*	
Total Fat 13g	20%
Saturated Fat 5g	25%
Trans Fat 0g	
Cholesterol 35mg	12%
Sodium 450mg	19%
Total Carbohydrate 4g	1%
Dietary Fiber 1g	4%
Sugars Less than 1g	
Protein 13g	25%



Nutrition Facts	
Serving Size 1 Package (79g)	
Servings Per Container 1	
Amount Per Serving	
Calories 330	Calories from Fat 240
% Daily Value*	
Total Fat 26g	40%
Saturated Fat 9g	45%
Trans Fat 0g	
Cholesterol 65mg	22%
Sodium 1050mg	44%
Total Carbohydrate 4g	1%
Dietary Fiber 2g	8%
Sugars 1g	
Protein 18g	36%



Nutrition Facts

Serving Size 1 Bag (18g)
Servings Per Container 32

Amount Per Serving	
Calories 100	Fat Cal. 80
% DV*	
Total Fat 9g	14%
Sat. Fat 0.5g	3%
Trans Fat 0g	
Polyunsat. Fat 2g	
Monounsat. Fat 5g	
Cholesterol 0mg	0%
Sodium 0mg	0%
Potassium 130mg	4%
Total Carb. 3g	1%
Dietary Fiber 2g	8%
Sugars 1g	
Protein 4g	



Nutrition Facts

Serving Size 1 pack (30.6g)
Servings Per Container 10

Amount Per Serving	
Calories 180.0	Calories from Fat 170cal
% Daily Values*	
Total Fat 16	20%
Saturated Fat 2.0g	10.0%
Trans Fat 0.0g	
Cholesterol 0.0mg	0.0%
Sodium 55.0mg	2.0%
Total Carbohydrates 8	3%
Dietary Fiber 2.0g	9.0%
Sugars 0.0g	
Protein 6.0g	

Available on Amazon and most grocery stores



Nutrition Facts	
Serving Size 1 Package (79g)	
Servings Per Container 1	
Amount Per Serving	
Calories 240	Calories from Fat 190
% Daily Value*	
Total Fat 21g	32%
Saturated Fat 9g	44%
Trans Fat 0g	
Cholesterol 45mg	15%
Sodium 1080mg	45%
Total Carbohydrate 2g	1%
Dietary Fiber less than 1g	3%
Sugars 0g	
Protein 13g	21%

Available at Target



Nutrition Facts		% Daily Value*		% Daily Value*	
12 servings per container		Total Fat 16g	21%	Dietary Fiber 2g	7%
Serving size 1 packet (43g)		Saturated Fat 8g	40%	Total Sugars 2g	
Calories 230		Polyunsaturated Fat 2g		Sugar Alcohol 10g	
		Monounsaturated Fat 4.5g		Protein 10g	20%
		Cholesterol less than 5mg	2%	Calcium 120mg	10%
		Sodium 110mg	5%	Iron 0.7mg	4%
		Total Carbohydrate 15g	5%	Potassium 150mg	4%
		Not a significant source of trans fat, added sugars and vitamin D.		Vitamin E 3.5mg	25%



Nutrition Facts	
4 servings per container	
Serving size 1 bag (38g)	
Amount per serving	
Calories 160	
% Daily Value*	
Total Fat 6g	8%
Saturated Fat 1.5g	8%
Trans Fat 0g	
Cholesterol 10mg	3%
Sodium 370mg	16%
Total Carbohydrate 14g	5%
Dietary Fiber 0g	0%
Total Sugars 2g	
Includes 0g Added Sugars	0%
Protein 12g	20%



Nutrition Facts	
Serving Size 1 pouch (42g/about 23 crisps)	
Servings Per Container 1	
Amount Per Serving	
Calories 190	Calories from Fat 70
% Daily Value*	
Total Fat 7g	11%
Saturated Fat 4g	21%
Trans Fat 0g	
Cholesterol 65mg	21%
Sodium 740mg	31%
Total Carbohydrate 8g	3%
Dietary Fiber 6g	22%
Sugars 2g	
Protein 22g	42%



Nutrition Facts	
1 Serving per container	
Serving size 1 Bag (21g)	
Amount per serving	
Calories 90	
% Daily Value*	
Total Fat 3g	4%
Saturated Fat 1g	5%
Trans Fat 0g	
Cholesterol 5mg	2%
Sodium 95mg	4%
Total Carbohydrate 4g	1%
Dietary Fiber 0g	0%
Total Sugars 4g	
Includes 3g Added Sugars	6%
Protein 12g	24%

Available on Amazon and most grocery stores



Nutrition Facts

Serving Size 4 pieces (85g)
Servings Per Container: About 1

Amount Per Serving	
Calories 300 Calories from Fat 220	
	% Daily Value*
Total Fat 25g	38%
Saturated Fat 12g	62%
Trans Fat 0g	
Cholesterol 30mg	10%
Sodium 360mg	15%
Total Carbohydrate 2g	1%
Dietary Fiber 0g	0%
Sugars 0g	
Protein 17g	34%



Nutrition Facts

Serving Size 21g
Servings Per Container 6

Amount Per Serving	
Calories 70.0 Calories from Fat 50cal	
	% Daily Values*
Total Fat 6g	8%
Saturated Fat 4.0g	20.0%
Trans Fat 0.0g	
Cholesterol 20.0mg	7.0%
Sodium 160.0mg	7.0%
Total Carbohydrates 0g	0%
Dietary Fiber 0.0g	0.0%
Sugars 0.0g	
Protein 5.0g	



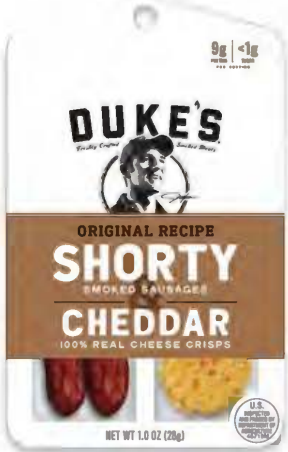
Nutrition Facts

Serving Size 1 oz (28g)
Servings Per Container About 2

Amount Per Serving	
Calories 70 Calories from Fat 10	
	% Daily Value
Total Fat 1.5g	2%
Saturated Fat 0.5g	3%
Trans Fat 0g	
Cholesterol 30mg	10%
Sodium 500mg	21%
Total Carbohydrate 0g	0%
Dietary Fiber 0g	0%
Sugars 0g	
Protein 14g	26%
Vitamin A 0%	Vitamin C 0%
Calcium 2%	Iron 6%

* Percent Daily Values are based on a 2,000 calorie diet.

Available at most grocery stores



Nutrition Facts

12 servings per container
Serving size 1 package (28g)

Amount per serving	
Calories 140	
	% Daily Value*
Total Fat 12g	15%
Saturated Fat 4.5g	23%
Trans Fat 0g	
Cholesterol 30mg	10%
Sodium 440mg	19%
Total Carbohydrate 1g	0%
Dietary Fiber 0g	0%
Total Sugars less than 1g	
Protein 9g	18%
Vitamin D 0mcg 0%	Calcium 70mg 6%
Iron 0.4mg 2%	Potassium 110mg 2%

*The % Daily Value (DV) tells you how much a nutrient in a serving of food contributes to a daily diet. 2,000 calories a day is used for general nutrition advice.



Nutrition Facts

1 serving per container
Serving size 1 Package (28g)

Amount per serving	
Calories 130	
	% Daily Value*
Total Fat 10g	13%
Saturated Fat 3.5g	18%
Trans Fat 0g	
Cholesterol 40mg	13%
Sodium 350mg	15%
Total Carbohydrate 1g	0%
Dietary Fiber 0g	0%
Total Sugars 0g	
Includes 0g Added Sugars	0%
Protein 8g	16%

Available on Amazon

Snacks



Nutrition Facts		
about 2.5 servings per container		
Serving size 12 crisps (30g)		
Calories	Per serving	Per container
	140	320
	% DV*	% DV*
Total Fat	10g 13%	24g 31%
Saturated Fat	2.5g 13%	6g 30%
Trans Fat	0g	0g
Cholesterol	0mg 0%	0mg 0%
Sodium	470mg 20%	1100mg 48%
Total Carb.	8g 3%	18g 7%
Dietary Fiber	2g 7%	6g 21%
Total Sugars	1g	1g
Incl. Added Sugars	0g 0%	0g 0%
Protein	5g	11g
Vitamin D	0mcg 0%	0mcg 0%
Calcium	13mg 2%	31mg 2%
Iron	1mg 6%	3mg 15%
Potassium	45mg 0%	106mg 2%

Other Flavors: Spicy Jalepeno, Black Pepper.

Available at Walmart, HEB, Target



Nutrition Facts		
About 3 servings per container		
Serving size 7 pops (28g)		
Calories	Per serving	Per package
	150	450
	% DV*	% DV*
Total Fat	9g 12%	28g 36%
Saturated Fat	1g 5%	3g 15%
Trans Fat	0g	0g
Polysaturated Fat	2.5g	8g
Monounsaturated Fat	6g	17g
Cholesterol	0mg 0%	0mg 0%
Sodium	280mg 12%	840mg 37%
Total Carb.	9g 3%	28g 10%
Dietary Fiber	4g 14%	12g 43%
Total Sugars	1g	3g
Incl. Added Sugars	0g 0%	0g 0%
Protein	7g 8%	20g 24%

Other Flavors: Broccoli & Cheddar, Sour Cream & Onion.

Available at Amazon, www.madeinnature.com.



Nutrition Facts		
About 2 servings per container		
Serving size About 20 crisps (28g)		
Calories	Per serving	Per container
	150	300
	% DV*	% DV*
Total Fat	11g 24%	22g 50%
Saturated Fat	1g 2%	2g 5%
Trans Fat	0g	0g
Cholesterol	28mg 6%	56mg 12%
Sodium	280mg 12%	560mg 24%
Total Carbohydrate	1g 0%	2g 0%
Dietary Fiber	0g 0%	0g 0%
Total Sugars	0g	0g
Includes Added Sugars	0g 0%	0g 0%
Protein	11g 24%	22g 50%

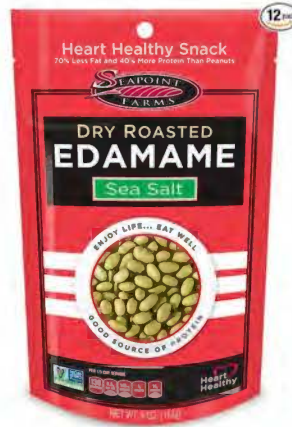
Other Flavors: Asiago & Pepper Jack, Cheddar, Bacon BBQ, Tomato Basil.

Available at Walmart, HEB, Target.

Available on Amazon and some grocery stores



Nutrition Facts	
Serving Size 1.00 oz	
Servings Per Container 2	
Amount Per Serving	
Calories 130	
% Daily Value	
Total Fat 10g	15%
Saturated Fat 1.5g	8%
Trans Fat 0g	
Cholesterol 0mg	0%
Sodium 240mg	10%
Total Carbohydrate 7g	2%
Dietary Fiber 3g	12%
Sugars 2g	
Protein 5g	



Nutrition Facts	
About 4 servings per container	
Serving size 1/3 cup (30g)	
Amount per serving	
Calories 130	
% Daily Value*	
Total Fat 5g	7%
Saturated Fat 0.5g	4%
Trans Fat 0g	
Cholesterol 0mg	0%
Sodium 140mg	6%
Total Carbohydrate 9g	3%
Dietary Fiber 6g	22%
Total Sugars 1g	
Includes 0g Added Sugars	0%
Protein 14g	20%



Nutrition Facts	
6 servings per container	
Serving Size 1oz (28g)	
Amount per serving	
Calories 120	
% Daily Value*	
Total Fat 7g	9%
Saturated Fat 2g	10%
Trans Fat 0g	
Cholesterol 5mg	2%
Sodium 280mg	12%
Total Carbohydrate 9g	3%
Dietary Fiber 4g	14%
Total Sugars <1g	
Includes 0g Added Sugars	0%
Protein 8g	14%

Available on Amazon and some grocery stores



Available at Central Market



Nutrition Facts	
Serving Size 1/2 oz. (14g)	
Servings Per Container 5	
Amount Per Serving	
Calories 80	Calories from Fat 50
% Daily Value*	
Total Fat 6g	9%
Saturated Fat 2g	10%
Trans Fat 0g	
Cholesterol 20mg	7%
Sodium 140mg	6%
Total Carbohydrate 0g	0%
Dietary Fiber 0g	0%
Sugars 0g	
Protein 7g	Not a significant source of protein.
Vitamin A 0%	Vitamin C 2%
Calcium 2%	Iron 0%

* Percent Daily Values are based on a 2,000 calorie diet.



Nutrition Facts	
About 2 servings per container	
Serving size: about 14 pieces (28.3g)	
Amount per serving	
Calories 170	
% Daily Value*	
Total Fat 14g	18%
Saturated Fat 9g	45%
Trans Fat 0g	
Cholesterol 40mg	13%
Sodium 390mg	17%
Total Carbohydrates 1g	0%
Dietary Fiber 0g	0%
Total Sugars 0g	
Includes 0g Added Sugars	0%
Protein 11g	
Vitamin D 0mcg	0%
Calcium 329mg	25%
Iron 0mg	0%
Potassium 32mg	0%

*The % Daily Value tells you how much a nutrient in a serving of food contributes to a daily diet. 2,000 calories a day is used for general nutrition advice.

Nutrition Facts	
About 2 servings per container	
Serving size: about 14 pieces (28.3g)	
Amount per serving	
Calories 170	
% Daily Value*	
Total Fat 14g	18%
Saturated Fat 9g	45%
Trans Fat 0g	
Cholesterol 40mg	13%
Sodium 360mg	16%
Total Carbohydrates 2g	1%
Dietary Fiber 0g	0%
Total Sugars 0g	
Includes 0g Added Sugars	0%
Protein 10g	
Vitamin D 0mcg	0%
Calcium 377mg	30%
Iron 0mg	0%
Potassium 33mg	0%

*The % Daily Value tells you how much a nutrient in a serving of food contributes to a daily diet. 2,000 calories a day is used for general nutrition advice.

Nutrition Facts	
About 2 servings per container	
Serving size: about 14 pieces (28.3g)	
Amount per serving	
Calories 170	
% Daily Value*	
Total Fat 14g	18%
Saturated Fat 9g	45%
Trans Fat 0g	
Cholesterol 45mg	15%
Sodium 350mg	15%
Total Carbohydrates 1g	0%
Dietary Fiber 1g	4%
Total Sugars 0g	
Includes 0g Added Sugars	0%
Protein 11g	
Vitamin D 0mcg	0%
Calcium 349mg	25%
Iron 0mg	0%
Potassium 38mg	0%

*The % Daily Value tells you how much a nutrient in a serving of food contributes to a daily diet. 2,000 calories a day is used for general nutrition advice.

Available on Amazon and some grocery stores

Perfect for Pantry



Nutrition Facts

14 servings per container	
Serving size 1 slice (28g)	
Amount per serving	
Calories	60
% Daily Value*	
Total Fat 3.5g	4%
Saturated Fat 0.5g	3%
Trans Fat 0g	
Polyunsaturated Fat 2g	
Monounsaturated Fat 1g	
Cholesterol 10mg	3%
Sodium 150mg	7%
Total Carbohydrates 7g	2%
Dietary Fiber 4g	16%
Total Sugars 1g	
Includes 0g Added Sugars	0%
Sugar Alcohol 0g	
Protein 5g	7%



Nutrition Facts

Serving Size 1 Pita (1 oz.) 28.3g	
Servings per container 8	
Amount Per Serving	
Calories 50	Calories from Fat 10
% Daily Value*	
Total Fat 1g	2%
Saturated Fat 0g	0%
Trans Fat 0g	
Cholesterol 0mg	0%
Sodium 250mg	11%
Total Carbohydrate 7g	2%
Dietary Fiber 3g	18%
Sugars 0g	
Protein 5g	

Available at most grocery stores



Total Fat 6g	9%
Saturated Fat 3g	15%
Cholesterol 85mg	28%
Sodium 310mg	13%
Total Carbohydrate 4g	1%
Dietary Fiber 1g	4%
Sugars 1g	
Includes 0g Added Sugars	
Protein 10g	



Total Fat 2.5g	4%
Saturated Fat 1.5g	8%
Cholesterol 35mg	12%
Sodium 130mg	5%
Total Carbohydrate 2g	1%
Dietary Fiber 1g	4%
Sugars 1g	
Includes 0g Added Sugars	
Protein 4g	

Available on Amazon and some grocery stores



Serving Size 1.00 tortilla(36g)

Amount Per Serving
Calories 50

	% Daily Value*
Total Fat 2g	3%
Saturated Fat 0g	0%
Trans Fat 0g	
Cholesterol 0mg	0%
Sodium 200mg	9%
Potassium 104mg	2%
Total Carbohydrate 11g	4%
Dietary Fiber 8g	29%
Total Sugars 0g	
Protein 5g	

Available at Amazon, HEB.



Nutrition Facts

Serving Size 30 g
Servings Per Container About 15

Amount Per Serving	Calories 180cal	Calories from Fat 120cal
	% Daily Values*	
Total Fat 15g	19%	
Saturated Fat 1.5g	7.00%	
Trans Fat 0g		
Cholesterol 0.00mg	0.00%	
Sodium 0mg	0.00%	
Total Carbohydrates 1g	0%	
Dietary Fiber 1g	4.00%	
Sugars 0g		
Protein 10g		

Available at Target, Walmart.



Nutrition Facts
About 2 servings per container
Serving size 1 cup (245g)

Amount per serving	Calories 250
	% Daily Value*
Total Fat 10g	13%
Saturated Fat 3.5g	18%
Trans Fat 0.5g	
Cholesterol 40mg	13%
Sodium 570mg	25%
Total Carbohydrate 22g	8%
Dietary Fiber 6g	21%
Total Sugars 3g	
Includes 1g Added Sugars	2%
Protein 18g	
Vitamin A	8%
Vitamin C	10%
Calcium	20%
Iron	10%

* The % Daily Value tells you how much a nutrient in a serving of food contributes to a daily diet. 2,000 calories a day is used for general nutrition advice.



Nutrition Facts
2 servings per container
Serving size 1 cup (245g)

Amount Per Serving	Calories 150
	% Daily Value*
Total Fat 9g	12%
Saturated Fat 8g	40%
Trans Fat 0g	
Cholesterol 5mg	2%
Sodium 610mg	27%
Total Carbohydrate 7g	3%
Dietary Fiber 3g	11%
Total Sugars 3g	
Includes 0g Added Sugars	0%
Protein 8g	16%
Vitamin D 0mcg	0%
Calcium 51mg	4%
Iron 1mg	6%
Potassium 434mg	10%

* The % Daily Value (DV) tells you how much a nutrient in a serving of food contributes to a daily diet. 2,000 calories a day is used for general nutrition advice.

Available at Target, Walmart.

Available at Whole Foods, Amazon, Fresh Market, you local grocery store.



Nutrition Facts Servings: 16, Serv. Size: 1 oz (28g), Amount Per Serving: **Calories 10**, Total Fat 0g (0% DV), Sat. Fat 0g (0% DV), *Trans* Fat 0g, **Cholest.** 0mg (0% DV), **Sodium** 150mg (7% DV), **Total Carb.** 2g (1% DV), Fiber 0g (0% DV), Total Sugars <1g (Incl. 0g Added Sugars, 0% DV), **Protein** 1g, Vit. D (0% DV), Calcium (4% DV), Iron (0% DV), Potas. (0% DV).



Nutrition Facts	
8 servings per container	
Serving Size 2 oz(57g)	
Amount Per Serving	
Calories	20
	% Daily Value*
Total Fat 0g	0%
Saturated Fat 0g	0%
<i>Trans</i> Fat 0g	
Cholesterol 0mg	0%
Sodium 460mg	20%
Total Carbohydrate 3g	1%
Dietary Fiber 2g	7%
Total Sugars 2g	
Includes 0g Added Sugars	0%
Protein 1g	
Vit. D 0mcg 0%	Calcium 0mg 0%
Iron 0mg 0%	Potassium 0%

*The % Daily Value (DV) tells you how much a nutrient in a serving of food contributes to a daily diet. 2,000 calories a day is used for general nutrition advice.



Nutrition Facts	
15 servings per container	
Serving size 2 Tbsp (30g)	
Amount per serving	
Calories	5
	% Daily Value*
Total Fat 0g	0%
Saturated Fat 0g	0%
<i>Trans</i> Fat 0g	
Cholesterol 0mg	0%
Sodium 180mg	8%
Total Carbohydrate 1g	0%
Dietary Fiber 1g	2%
Total Sugars 0g	
Includes 0g Added Sugars	0%
Protein 0g	
Vitamin D 0mcg	0%
Calcium 9mg	0%
Iron 0mg	0%
Potassium 51mg	2%

*The % Daily Value tells you how much a nutrient in a serving of food contributes to a daily diet. 2,000 calories a day is used for general nutrition advice.

Available at most grocery stores



Nutrition Facts

Serving Size 1/2 oz. (14g)
Servings Per Container 24

Amount Per Serving		Calories from Fat 45	
Calories 80		% Daily Value*	
Total Fat	5g	8%	
Saturated Fat	2g	10%	
Trans Fat	0g		
Cholesterol	15mg	5%	
Sodium	260mg	13%	
Total Carbohydrate	0g	0%	
Dietary Fiber	0g	0%	
Sugars	0g		
Protein	10g		

Not A Significant Source Of Protein



Nutrition Facts

Serving Size 1 slice prepared (18g mix)
Servings Per Container 12

Calories	Per Serving		As Prepared	
	90		130	
	% Daily Value*		% Daily Value*	
Total Fat	7g	9%	11g	14%
Saturated Fat	0.5g	3%	2.5g	13%
Trans Fat	0g		0g	
Cholesterol	0mg	0%	50mg	17%
Sodium	10.5mg	5%	120mg	3%
Total Carbohydrate	6g	2%	6g	2%
Dietary Fiber	5g	14%	5g	14%
Total Sugars	1g		1g	
Added Sugars	0g	0%	0g	0%
Protein	3g		4g	



Nutrition Facts

Serving Size 6 Pork Churros (14g)
Servings Per Container: 16

Amount Per Serving		Calories from Fat 25	
Calories 70		% Daily Value*	
Total Fat	3g	8%	
Saturated Fat	2g	10%	
Trans Fat	0g		
Cholesterol	5mg	2%	
Sodium	200mg	8%	
Total Carbohydrate	0g	0%	
Dietary Fiber	0g	0%	
Sugars	0g		
Protein	10g		



Nutrition Facts

12 servings per container
Serving size One 3-inch biscuit (49g)

Calories	Dry Mix		Prepared	
	100		190	
	% Daily Value*		% Daily Value*	
Total Fat	8g	10%	16g	21%
Saturated Fat	1.5g	8%	6g	30%
Trans Fat	0g		0g	
Cholesterol	0mg	0%	70mg	23%
Sodium	240mg	10%	260mg	11%
Total Carbohydrate	10g	4%	10g	4%
Dietary Fiber	8g	29%	8g	29%
Total Sugar	1g		1g	
Includes Added Sugars	0g	0%	0g	0%
Protein	3g		5g	

Available on Amazon



Nutrition Facts

1 servings per container
Serving size 1 pouch (42g)

Amount per serving
Calories 230

	% Daily Value*
Total Fat 20g	26%
Saturated Fat 10g	50%
Trans Fat 0g	
Polyunsaturated Fat 2g	
Monounsaturated Fat 6g	
Cholesterol 0mg	0%
Sodium 60mg	3%
Total Carbohydrate 13g	5%
Dietary Fiber 6g	21%
Total Sugars 2g	
Includes 0g Added Sugars	0%
Sugar Alcohol 3g	
Protein 5g	



Nutrition Facts

Serving Size 1 Packet (1.0 Fl Oz)
 Servings Per Container

Calories 210.00
Total Fat 22.00 g
Saturated Fat 4.00 g
Trans Fat 0.00 g
Cholesterol 0.00 mg
Sodium 30.00 mg
Total Carbohydrate 4.00 g
Sugars 2.00 g
Dietary Fiber 3.00 g
Protein 2.00 g



Nutrition Facts

Serving Size 2 Tablespoons (28g)
 Servings Per Container 16

Calories 170.00
Calories from Fat 130.00
Total Fat 15.00 g
Saturated Fat 1.00 g
Trans Fat 0.00 g
Cholesterol 0.00 mg
Sodium 25.00 mg
Total Carbohydrate 7.00 g
Sugars 3.00 g
Dietary Fiber 3.00 g
Protein 6.00 g

Available on Amazon and some grocery stores



Supplement Facts
Serving Size 2 Scoops (20 g)
Servings Per Container About 28

	Amount Per Serving	% Daily Value
Calories	70	
Protein	18 g	0%*
Vitamin C (ascorbic acid)	90 mg	100%
Sodium	110 mg	5%
<hr/>		
Hydrolyzed collagen (from bovine hides)	20 g	**
Hyaluronic Acid (from sodium hyaluronate)	20 mg	**

*Percent Daily Values are based on a diet of other people's secrets.
**Daily Value not established.



5g
Organic Fiber

21g
Protein

5g
Net Carbs

Nutrition Facts

Serving Size 2 Scoops (46g)
Servings Per Container About 10

Amount Per Serving		
Calories	150	Calories from Fat 40
<hr/>		
% Daily Value*		
Total Fat	4g	8%
Saturated Fat	<0.5g	2%
Trans Fat	0g	
Cholesterol	0mg	0%
Sodium	180mg	8%
Potassium	60mg	2%
Total Carbohydrate	15g	4%
Dietary Fiber	5g	20%
Sugars	0g	
Erythritol	5g	
Protein	21g	42%



Nutrition Facts
About 17 servings per container
Serving size 1/3 cup (27g)

Amount per serving		
Calories	90	
<hr/>		
% Daily Value		
Total Fat	0.5g	1%
Saturated Fat	0g	0%
Trans Fat	0g	
Cholesterol	10mg	3%
Sodium	70mg	3%
Total Carbohydrate	3g	1%
Dietary Fiber	1g	4%
Total Sugars	0g	
Includes 0g Added Sugars		0%
Protein	20g	
Calcium	482mg	35%
Iron	1mg	6%
Potassium	186mg	4%

Available on Amazon and some grocery stores

Healthy Fats



Nutrition Facts

4 servings per container
Serving size 1 mini cup (57g)

Amount per serving
Calories 120

	% Daily Value*
Total Fat 11g	14%
Saturated Fat 2g	10%
Trans Fat 0g	
Cholesterol 0mg	0%
Sodium 270mg	12%
Total Carbohydrate 4g	1%
Dietary Fiber 3g	11%
Total Sugars 1g	
Includes 0g Added Sugars	0%
Protein 1g	

Available at most grocery stores



Nutrition Facts Servings: About 8, **Serv. size: 2 Tbsp (30mL)**, Amount per serving:
Calories 130, Total Fat 14g (18% DV), Sat. Fat 1.5g (8% DV), Trans Fat 0g, Polyunsat. Fat 2g, Monounsat. Fat 10g, **Cholest. 0mg (0% DV)**, **Sodium 210mg (9% DV)**, **Total Carb. 1g (0% DV)**, Fiber 0g (0% DV), Total Sugars 0g (Incl. 0g Added Sugars, 0% DV), **Protein 0g**.

Available on Amazon & most grocery stores



Nutrition Facts

Serving Size: 2 Tbsp. (30 mL)
Servings per Container: About 9

	Amount Per Serving
Calories	140
Fat Calories	130
Total Fat	16 g
Saturated Fat	2.5 g
Cholesterol	5 mg
Sodium	140 mg
Total Carbohydrate	1 g
Protein	0 g

Available on Amazon & most grocery stores



Nutrition Facts	
Serving Size 1 oz (28 g)	
Amount Per Serving	
Calories 186	
% Daily Value*	
Total Fat 19g	24%
Saturated Fat 4g	21%
Trans Fat	
Cholesterol 0mg	0%
Sodium 1mg	0%
Total Carbohydrate 3g	1%
Dietary Fiber 2g	8%
Sugars 1g	
Protein 4g	8%
Vitamin A	0% • Vitamin C
Calcium	3% • Iron

*Percent Daily Values are based on a 2,000 calorie diet. Your daily values may be higher or lower depending on your calorie needs.



Nutrition Facts	
5 servings per container	
Serving size 1 oz (28g/about 24 nuts)	
Amount per serving	
Calories 170	
% Daily Value*	
Total Fat 15g	20%
Saturated Fat 1g	6%
Trans Fat 0g	
Polyunsaturated Fat 3.5g	
Monounsaturated Fat 10g	
Cholesterol 0mg	0%
Sodium 150mg	6%
Total Carbohydrate 5g	2%
Dietary Fiber 3g	10%
Total Sugars 1g	
Includes 0g Added Sugars	0%
Protein 6g	5%



Nutrition Facts	
40 servings per container	
Serving size 1 oz (28g/about 1/4 cup)	
Amount per serving	
Calories 180	
% Daily Value*	
Total Fat 18g	23%
Saturated Fat 1.5g	6%
Trans Fat 0g	
Cholesterol 0mg	0%
Sodium 0mg	0%
Total Carbohydrate 4g	1%
Dietary Fiber 2g	7%
Total Sugars less than 1g	
Includes 0g Added Sugars	0%
Protein 4g	
Vitamin D 0mg	0%
Calcium 30mg	2%
Iron 0.8mg	4%
Potassium 120mg	2%

*The % Daily Value (DV) tells you how much a nutrient in a serving of food contributes to a daily diet. 2,000 calories a day is used for general nutrition advice.



Nutrition Facts

Serving Size 30 g
Servings Per Container About 15

Amount Per Serving

Calories 180cal Calories from Fat 120cal

% Daily Values*

Total Fat 15 19%

Saturated Fat 1.5g 7.00%

Trans Fat 0g

Cholesterol 0.00mg 0.00%

Sodium 0mg 0.00%

Total Carbohydrates 1 0%

Dietary Fiber 1g 4.00%

Sugars 0g

Protein 10

Available on Amazon & some grocery stores



Nutrition Facts

Serving Size 1 Packet (1.0 Fl Oz)
Servings Per Container

Calories	210.00
Total Fat	22.00 g
Saturated Fat	4.00 g
Trans Fat	0.00 g
Cholesterol	0.00 mg
Sodium	30.00 mg
Total Carbohydrate	4.00 g
Sugars	2.00 g
Dietary Fiber	3.00 g
Protein	2.00 g



Nutrition Facts

10 servings per container
Serving size
1 pack (32g)

Calories	190
% Daily Value*	
Total Fat 15g	19%
Saturated Fat 3g	15%
Trans Fat 0g	
Cholesterol 0mg	0%
Sodium 105mg	5%
Total Carb. 7g	3%
Dietary Fiber 2g	7%
Total Sugars 3g	
Incl. 0g Added Sugars	0%
Protein 9g	11%



Serving Size 1 packet

AMOUNT PER 1 PACKET

Calories 188

Calories from Fat 160

% DV*	
28%	Total Fat 18g
10%	Saturated Fat 2g
	Trans Fat 0g
0%	Cholesterol 0mg
0%	Sodium 0mg
2%	Total Carbohydrates 6g
8%	Dietary Fiber 2g
	Sugars 1g
	Protein 5g



Nutrition Facts

24 servings per container
Serving size 1 square (35g)

Calories	Per 1 Square		Per 2 Squares	
	170	340		
	% DV*		% DV*	
Total Fat	12g	15%	24g	31%
Saturated Fat	5g	25%	10g	50%
Trans Fat	0g		0g	
Cholesterol	0mg	0%	0mg	0%
Sodium	55mg	2%	105mg	5%
Total Carb.	12g	4%	24g	9%
Dietary Fiber	4g	16%	8g	32%
Total Sugars	5g		10g	
Incl. Added Sugars	3g	6%	6g	12%
Protein	6g	11%	12g	22%
Vitamin D	0mcg	0%	0mcg	0%
Calcium	10mg	2%	30mg	2%
Iron	1.4mg	8%	2.8mg	15%
Potassium	190mg	4%	380mg	8%

* The % Daily Value (DV) tells you how much a nutrient in a serving of food contributes to a daily diet. 2,000 calories a day is used for general nutrition advice.

Available on Amazon & most grocery stores



Nutrition Facts

2.0000 Servings Per Container (Santa Catarina Tuna Filet in Oregano & Oil, 4 ct)
Serving Size 2.10 Oz(60g)

Amount Per Serving	
Calories	106
% Daily Value*	
Total Fat 9g	14%
Saturated Fat 0.3g	
Trans Fat 0g	
Cholesterol 6mg	
Sodium 270mg	11%
Total Carbohydrates 0g	0%
Dietary Fiber 0g	
Total Sugars 0g	
Protein 16g	



Calories 120

Calories from Fat 70

% DV*	
11%	Total Fat 7g
Saturated Fat 1.5g	
Trans Fat 0g	
7%	Cholesterol 20mg
5%	Sodium 120mg
Total Carbohydrates 0g	
Dietary Fiber 0g	
Sugars 0g	
	Protein 13g



Nutrition Facts

Servings: 1.5 (Drained)
Serv. size: 3 ounces (85g),
Calories per serving 200,
Total Fat 14g (18% DV), Sat. Fat 2g (10% DV),
 trans Fat 0g, **Cholest.** 20mg (7% DV), **Sodium**
 180mg (8% DV), **Total Carb.** 0g (0% DV),
 Fiber 0g (0% DV), Total Sugars 0g (Incl. 0g
 Added Sugars, 0% DV), **Protein** 20g (40% DV),

Available on Amazon & most grocery stores

Low Carb Treats



Nutrition Facts	
6 servings per container	
Serving size	1 Ounce
Amount Per Serving	
Calories	120
	<small>% Daily Value*</small>
Total Fat 10g	13%
Saturated Fat 5g	25%
Trans Fat 0g	
Cholesterol 0mg	0%
Sodium 120mg	5%
Total Carbohydrate 15g	5%
Dietary Fiber 13g	46%
Total Sugars 0g	
Includes 0g Added Sugars	0%
Sugar Alcohol 0g	
Protein 1g	2%
Vitamin D 0mcg	0%
Calcium 130mg	10%
Iron 1.08mg	6%
Potassium 0mg	0%

*The % Daily Value (DV) tells you how much a nutrient in a serving of food contributes to a daily diet. 2,000 calories a day is used for general nutrition advice.

INGREDIENTS: Dark Chocolate (Unsweetened Chocolate, Cocoa Butter), Soluble Corn Fiber, Almonds, Sea Salt, Sunflower Lecithin, Monk Fruit Extract, Madagascar Bourbon Vanilla Beans. Processed in a facility that has products containing dairy, tree nuts, and peanuts.

Available at www.choczero.com



Nutrition Facts	
Serving Size 1/2 Cup (64g)	
Servings Per Container 4	
Amount Per Serving	
Calories 70	Calories from Fat 20
	<small>% Daily Value*</small>
Total Fat 2g	3%
Saturated Fat 1g	5%
Trans Fat 0g	
Cholesterol 45mg	15%
Sodium 115mg	5%
Total Carbohydrate 14g	5%
Dietary Fiber 3g	12%
Sugars 6g	
Sugar Alcohol 5g	
Protein 5g	10%
Vitamin A 2%	Vitamin C 0%
Calcium 10%	Iron 2%

*Percent Daily Values are based on a diet of other people's misdeeds.



Nutrition Facts	
Serving Size 0.50 cup	
Servings Per Container 4	
Amount Per Serving	
Calories 150	
	<small>% Daily Value*</small>
Total Fat 14g	22%
Saturated Fat 8g	40%
Trans Fat 0g	
Cholesterol 70mg	23%
Sodium 15mg	1%
Total Carbohydrate 10g	3%
Dietary Fiber 2g	8%
Sugars 0g	
Protein 2g	

Percent Daily Values are based on a 2,000 calorie diet.

Available at most grocery stores



Nutrition Facts

About 2 servings per container
Serving size About 8 pieces (30g)
Amount per serving **Calories** 140

	% Daily Value*
Total Fat 14g	18%
Saturated Fat 6g	30%
Trans Fat 0g	
Cholesterol 15mg	5%
Sodium 140mg	6%
Total Carbohydrate 10g	4%
Dietary Fiber 2g	7%
Total Sugars 1g	
Includes 0g Added Sugars	0%
Erythritol 6g	
Protein 4g	8%



Nutrition Facts

Serving Size 30.00 g
Servings Per Container 3

Amount Per Serving	% Daily Value
Calories 130	
Total Fat 11g	17%
Saturated Fat 6g	30%
Trans Fat 0g	
Sodium 50mg	2%
Total Carbohydrate 15g	5%
Dietary Fiber 6g	24%
Protein 3g	

Available on Amazon & some grocery stores



Nutrition Facts		Amount/serving	%DV	Amount/serving	%DV
1 serving per container		Total Fat 10g	13%	Total Carb. 20g	7%
Serving size 1 brownie (2oz)		Sat. Fat 0g	0%	Fiber 9g	32%
		Trans Fat 0g		Total Sugars 0g	
Calories 120		Cholest. 0mg	0%	Sugar Alcohol 10g	
per serving		Sodium 132mg	2%	Protein 5g	10%
		Vitamin D 0% • Potassium 0% • Calcium 0% • Iron 0%			

Available at Amazon, www.thinslimfoods.com



Nutrition Facts

30 servings per container
Serving size 1 piece (14g/0.5 oz)

Amount per serving		
Calories		90
		% Daily Value*
Total Fat 8g		10%
Saturated Fat 3.5g		17%
Trans Fat 0g		
Polyunsaturated Fat 0g		
Monounsaturated Fat 1.5g		
Cholesterol 0mg		0%
Sodium 0mg		0%
Total Carbohydrate 3g		1%
Dietary Fiber 2g		7%
Total Sugars 2g		
Includes 2g Added Sugars		3%
Protein 1g		

Available at Costco & www.chocxo.com



Nutrition Facts

Serving size 1/4 package (12g)
Servings per container 4

Amount Per Serving	As Packaged	1/4 Cup (100ml) Prepared*	
Calories	25	70	
Calories from Fat	0	0	
% Daily Values**			
Total Fat 0.1g***	0%	0%	
Saturated Fat 0g	0%	0%	
Trans Fat 0g			
Cholesterol 0mg	0%	0%	
Sodium 30mg	13%	18%	
Total Carbohydrate 10g	3%	8%	
Dietary Fiber 1.7g	6%	6%	
Sugar 0g			
Sugar Alcohols 4g			
Protein 0g			
Vitamin A	0%	4%	
Vitamin C	0%	0%	
Calcium	0%	15%	
Iron	0%	0%	

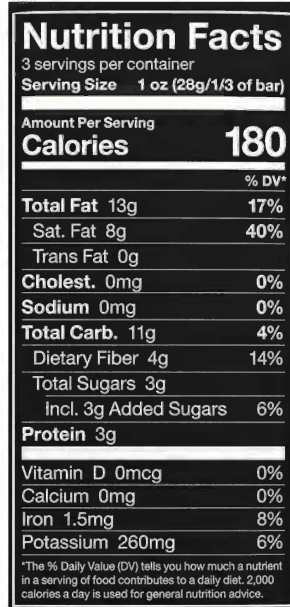
*1/4 cup prepared using fat free milk contains 12g total carbohydrate (8g sugar).
**Percent Daily Values are based on a diet of 2,000 calories.
***Amount in dry mix.



NUTRITION FACTS

Serving size: 0.17 OZ (5 g)
Servings per sachet: 4

Amount Per Serving	1 Serv as Packaged	% DV**
Calories	5	
Calories from Fat	0	
Total Fat 0g*	0%	
Saturated Fat 0g	0%	
Trans Fat 0g		
Cholesterol 0mg	0%	
Sodium 22mg	1%	
Total carbohydrates <1g	0%	
Starch	0g	
Sugar	0g	
Polyols	2g	
Dietary Fiber <1g	2%	
Protein 0g		



Available on Amazon & some grocery stores

Healthy Carb Swaps



Nutrition Facts

6 servings per container
Serving size 1/3 Crust (45g)

Amount Per Serving
Calories 120

	% Daily Value*
Total Fat 7g	9%
Saturated Fat 1g	5%
Trans Fat 0g	
Cholesterol 0mg	0%
Sodium 170mg	7%
Total Carbohydrate 6g	2%
Dietary Fiber 4g	14%
Total Sugars 2g	
Includes 0g Added Sugars	0%
Protein 7g	



Nutrition Facts

Serving Size 1.50 oz
Servings Per Container 4

Amount Per Serving
Calories 180

	% Daily Value
Total Fat 13g	20%
Saturated Fat 9g	45%
Trans Fat 0g	
Cholesterol 45mg	15%
Sodium 390mg	16%
Total Carbohydrate 1g	0%
Dietary Fiber 0g	0%
Sugars 0g	
Protein 13g	

Available at Whole Foods & Walmart

Available at most grocery stores



Calories 70

	% Daily Value*
Total Fat 5g	6%
Saturated Fat 4.5g	23%
Trans Fat 0g	
Cholesterol 0mg	0%
Sodium 10mg	0%
Total Carbohydrate 6g	2%
Dietary Fiber 2g	7%
Total Sugars 3g	
Includes Added Sugars 0g	0%
Protein 1g	

Available at Thrive Market



Total Fat 6g	9%
Saturated Fat 3g	15%
Cholesterol 85mg	26%
Sodium 310mg	13%
Total Carbohydrate 4g	1%
Dietary Fiber 1g	4%
Sugars 1g	
Includes 0g Added Sugars	
Protein 10g	



Total Fat 2.5g	4%
Saturated Fat 1.5g	8%
Cholesterol 35mg	12%
Sodium 130mg	5%
Total Carbohydrate 2g	1%
Dietary Fiber 1g	4%
Sugars 1g	
Includes 0g Added Sugars	
Protein 4g	

Available on Amazon & Whole Foods

Healthy Carb Swaps

1 wrap (28g)



Calories 30
Total Fat 0g
Saturated Fat 0g
Trans Fat 0g
Cholesterol 0mg
Sodium 170mg
Carbohydrates 1g
Dietary Fiber <1g
Total Sugars 0g



Nutrition Facts

Serving Size 1 wrap (5.33 g)
 12 servings per container

Amount Per Serving		
Calories		8
		% DV*
Total Fat	0g	0%
Saturated Fat	0g	0%
Trans Fat	0g	
Cholesterol	10mg	4%
Sodium	25mg	1%
Total Carbs.	0g	0%
Dietary Fiber	0g	0%
Total Sugars	0g	
Includes 0g Added Sugars		0%
Protein	1g	

Protein 5g



Nutrition Facts	Amount/Serving	%DV*	Amount/Serving	%DV*
	About 2 servings per container Serving Size 3 oz (85g) Calories per serving 5	Total Fat 0g	0%	Total Carbohydrate 3g
	Saturated Fat 0g	0%	Dietary Fiber 2g	7%
	Trans Fat 0g		Total Sugars 0g	
	Cholesterol 0mg	0%	Includes 0g Added Sugars	0%
	Sodium 0mg	0%	Protein 0g	
	Vitamin D 0mcg 0% • Calcium 20mg 2% • Iron 0mg 0% • Potassium 0mg 0%			



Amount Per Serving		
Calories		15
Calories from Fat		0
		% Daily Value*
Total Fat	0g	0%
Saturated Fat	0g	0%
Trans Fat	0g	
Cholesterol	0mg	0%
Sodium	5mg	0%
Potassium	0mg	0%
Total Carbohydrate	4g	
Dietary Fiber	3g	11%
Total Sugars	0g	0%
Added Sugars	0g	0%
Protein	0g	0%

Available on Amazon & some grocery stores

Healthy Carb Swaps



Nutrition Facts	
About 13 servings per container	
Serving size 1/4 cup frozen (85g)	
1/2 cup prepared	
Amount per serving	
Calories	20
	% Daily Value*
Total Fat 0g	0%
Saturated Fat 0g	0%
Trans Fat 0g	
Cholesterol 0mg	0%
Sodium 20mg	1%
Total Carbohydrate 4g	1%
Dietary Fiber 2g	7%
Total Sugars 2g	
Includes 0g Added Sugars	0%
Protein 2g	
Vitamin D 0mcg	0%
Calcium 19mg	2%
Iron 0mg	0%
Potassium 164mg	4%
Vitamin C 41mg	45%

* The % Daily Value (DV) tells you how much a nutrient in a serving of food contributes to a daily diet. 2,000 calories a day is used for general nutrition advice.



Nutrition Facts	
4 servings per container	
Serving size 3/4 cup (85g)	
Amount per serving	
Calories	15
	% Daily Value*
Total Fat 0g	0%
Saturated Fat 0g	0%
Trans Fat 0g	
Cholesterol 0mg	0%
Sodium 0mg	0%
Total Carbohydrate 2g	1%
Dietary Fiber 1g	4%
Total Sugars 1g	
Includes 0g Added Sugars	0%
Protein 1g	
Vitamin D 0mcg	0%
Calcium 15mg	2%
Iron 0mg	0%
Potassium 224mg	4%

* The % Daily Value (DV) tells you how much a nutrient in a serving of food contributes to a daily diet. 2,000 calories a day is used for general nutrition advice.



Nutrition Facts	
About 3 servings per container	
Serving size 75g	
Amount per serving	
Calories	20
	% Daily Value*
Total Fat 0g	0%
Saturated Fat 0g	0%
Trans Fat 0g	
Cholesterol 0mg	0%
Sodium 60mg	3%
Total Carbohydrate 4g	1%
Dietary Fiber 2g	7%
Total Sugars 0g	
Includes Added Sugars 0g	0%
Protein 1g	2%



Nutrition Facts	
3 servings per container	
Serving size (75g)	
Amount Per Serving	
Calories	20
	% Daily Value*
Total Fat 0g	0%
Saturated Fat 0g	0%
Trans Fat 0g	
Sodium 60mg	3%
Total Carbohydrate 4g	1%
Dietary Fiber 2g	7%
Total Sugars 0g	
Includes 0g Added Sugars	0%
Protein 1g	2%

Available at most grocery stores

Tortillas



Nutrition Facts	
8 servings per container	
Serving size	1 Tortilla (45g)
Amount per serving	
Calories	50
% Daily Value*	
Total Fat 1.5g	2%
Saturated Fat 0g	0%
Trans Fat 0g	
Cholesterol 0mg	0%
Sodium 280mg	12%
Total Carbohydrate 15g	5%
Dietary Fiber 11g	39%
Soluble Fiber 0g	
Insoluble Fiber 11g	
Total Sugars 0g	
Includes 0g Added Sugars	0%
Protein 5g	



Nutrition Facts	
8 Servings per container	
Serving Size	1 tortilla (33g)
Amount per serving	
Calories	60
% Daily Value*	
Total Fat 3g	4%
Saturated Fat 1g	5%
Trans Fat 0g	
Polysaturated Fat 1.5g	
Monounsaturated Fat 0g	
Cholesterol 0mg	0%
Sodium 230mg	10%
Total Carbohydrate 13g	5%
Dietary Fiber 10g	36%
Total Sugars 0g	
Includes 0g Added Sugars	0%
Protein 4g	



Nutrition Facts	
Serving Size: 1 Tortilla (62g)	
Servings Per Container 8	
Amount Per Serving	
Calories 90	Calories from Fat 25
% Daily Value*	
Total Fat 3g	5%
Saturated Fat 0g	0%
Trans Fat 0g	
Cholesterol 0mg	0%
Sodium 350mg	15%
Total Carbohydrate 19g	6%
Dietary Fiber 13g	52%
Sugars 1g	
Protein 8g	

Available on Amazon & some grocery stores



Nutrition Facts

8 Servings per container
Serving Size 1 tortilla (43g)

Amount per serving
Calories 60

% Daily Value*

Total Fat 3.5g 4%
 Saturated Fat 1.5g 8%
 Trans Fat 0g
 Polyunsaturated Fat 1.5g
 Monounsaturated Fat 0g

Cholesterol 0mg 0%
Sodium 330mg 14%
Total Carbohydrate 18g 7%
 Dietary Fiber 15g 54%
 Total Sugars 0g
 Includes 0g Added Sugars 0%

Protein 6g



Nutrition Facts

6 Servings per container
Serving Size 1 tortilla (43g)

Amount per serving
Calories 70

% Daily Value*

Total Fat 3g 4%
 Saturated Fat 1g 5%
 Trans Fat 0g
 Polyunsaturated Fat 1.5g
 Monounsaturated Fat 0g

Cholesterol 0mg 0%
Sodium 300mg 13%
Total Carbohydrate 15g 5%
 Dietary Fiber 12g 43%
 Total Sugars 0g
 Includes 0g Added Sugars 0%

Protein 7g



Nutrition Facts

7 servings per container
Serving size 4 tortilla (43g)

Amount per serving
Calories 90

% Daily Value*

Total Fat 1g 1%
 Saturated Fat 0g 0%
 Trans Fat 0g
 Polyunsaturated Fat 0.5g
 Monounsaturated Fat 0g

Cholesterol 0mg 0%
Sodium 20mg 1%
Total Carbohydrate 19g 7%
 Dietary Fiber 2g 7%
 Total Sugars 2g
 Includes 0g Added Sugars 0%

Protein 2g



Nutrition Facts

8 Servings per container
Serving Size 1 tortilla (43g)

Amount per serving
Calories 80

% Daily Value*

Total Fat 3.5g 4%
 Saturated Fat 1.5g 8%
 Trans Fat 0g
 Polyunsaturated Fat 1.5g
 Monounsaturated Fat 0.5g

Cholesterol 0mg 0%
Sodium 360mg 16%
Total Carbohydrate 17g 6%
 Dietary Fiber 12g 43%
 Total Sugars 0g
 Includes 0g Added Sugars 0%

Protein 5g



Nutrition Facts

6 Servings per container
Serving Size 2 tortillas(47g)

Amount per serving
Calories 70

% Daily Value*

Total Fat 2.5g 3%
 Saturated Fat 1g 5%
 Trans Fat 0g
 Polyunsaturated Fat 1g
 Monounsaturated Fat 0g

Cholesterol 0mg 0%
Sodium 300mg 13%
Total Carbohydrate 21g 8%
 Dietary Fiber 15g 54%
 Total Sugars 0g
 Includes 0g Added Sugars 0%

Protein 6g

Available on Amazon & some grocery stores

Sweeteners



Nutrition Facts	
Serving Size: 5 drops (0.208 ml) per 8 oz. of liquid or to taste	
Servings Per Bottle: 288	
Amount Per Serving	
Calories 0	Calories from Fat 0
% Daily Value*	
Total Fat 0g	0%
Saturated Fat 0g	0%
Trans Fat 0g	0%
Cholesterol 0mg	0%
Sodium 0mg	0%
Total Carbohydrate 0g	0%
Dietary Fiber 0g	0%
Sugar 0g	0%
Protein 0g	0%
Not a significant source of Vitamin A, Vitamin C, Calcium, and Iron	
*Percent Daily Values are based on 2,000 calorie diet	
Ingredients: Purified Water, Organic Stevia Leaf Extract, Natural Flavors, Vanilla Extract	

Available on Amazon & most local grocery stores



Nutrition Facts	
85 servings per container	
Serving Size 1 tsp (4g)	
Amount per serving	
Calories	0
% Daily Value*	
Total Fat 0g	0%
Sodium 0g	0%
Total Carb 4g	1%
Total Sugars 0g	
Includes 0g Added Sugars	0%
Erythritol 4g	
Protein 0g	0%
Not a significant source of Sat. Fat, Trans Fat, Cholest., Fiber, Vitamin D, Calcium, Iron or Potassium.	
*The % Daily Value (DV) tells you how much a nutrient in a serving of food contributes to a daily diet. 2,000 calories a day is used for general nutrition advice.	

Ingredients: Erythritol, oligosaccharides and natural flavors.

Nutrition Facts	
113 servings per container	
Serving Size 1 tsp (3g)	
Amount per serving	
Calories	0
% Daily Value*	
Total Fat 0g	0%
Sodium 0g	0%
Total Carb 3g	1%
Total Sugars 0g	
Includes 0g Added Sugars	0%
Erythritol 3g	
Protein 0g	0%
Not a significant source of Sat. Fat, Trans Fat, Cholest., Fiber, Vitamin D, Calcium, Iron or Potassium.	
*The % Daily Value (DV) tells you how much a nutrient in a serving of food contributes to a daily diet. 2,000 calories a day is used for general nutrition advice.	

Ingredients: Erythritol, oligosaccharides and natural flavors.

Nutrition Facts	
85 servings per container	
Serving Size 1 tsp (4g)	
Amount per serving	
Calories	0
% Daily Value*	
Total Fat 0g	0%
Sodium 0g	0%
Total Carb 4g	1%
Total Sugars 0g	
Includes 0g Added Sugars	0%
Erythritol 4g	
Protein 0g	0%
Not a significant source of Sat. Fat, Trans Fat, Cholest., Fiber, Vitamin D, Calcium, Iron or Potassium.	
*The % Daily Value (DV) tells you how much a nutrient in a serving of food contributes to a daily diet. 2,000 calories a day is used for general nutrition advice.	

Ingredients: Erythritol, prebiotic oligosaccharides, vegetable glycerin, fruit juice concentrate (for color), and natural flavors.

SWERVE SUGAR REPLACEMENTS
Available at Amazon & most grocery stores

Stay Hydrated



Available at Amazon & some grocery stores

Supplement Facts

Serving Size 1 Scoop (7 g) (0.24 oz)

Servings Per Container About 45

	Amount Per Serving	% Daily Value
Calories	5	
Total Carbohydrate	1 g	<1%*
Sodium	140 mg	6%
Calcium	18 mg	2%
Magnesium	5 mg	1%
Potassium (as Potassium Citrate Monohydrate)	33 mg	1%
Zinc (as Zinc HVP Chelate)	0.16 mg	1%
Biotin	0.3 mcg	1%
Vitamin B12 (as Cyanocobalamin)	0.3 mcg	13%
Folate	12 mcg DFE (7 mcg Folic Acid)	3%
Niacin (as Nicotinic Acid)	0.3 mg	2%
Pantothenic Acid (as Calcium D-Pantothenate)	0.27 mg	5%
Vitamin B6 (as Pyridoxine Hydrochloride)	0.3 mg	18%
Riboflavin	0.3 mg	23%
Thiamine (as Thiamine Hydrochloride)	0.3 mg	25%
L-Leucine	1202 mg	**
L-Isoleucine	544 mg	**
L-Valine	544 mg	**
Glycine	460 mg	**
L-Glutamine	973 mg	**
Taurine	135 mg	**
Calcium Carbonate from <i>Lithothamnion spp.</i> (Aquamin™)	36.8 mg	**
Magnesium Citrate	13.6 mg	**
Choline (as Choline Bitartrate)	300 mcg	**
Inositol	300 mcg	**

*Percent Daily Values are based on a 2,000 calorie diet.
**Daily Value not established.



Supplement Facts:

Serving Size: 2.8 grams (approx. 1 scoop)

Servings Per Container: 70

	Amount Per Serving:	% Daily Value:
Calories	10	
Total Carbohydrate	2 g	1%*
Vitamin C (as Acerola Berry Extract)	70 mg	78%
Calcium (as Tri-Calcium Citrate)	35 mg	3%
Potassium (as Tri-Potassium Citrate)	160 mg	3%
Stevia Leaf Extract	60 mg	†
Pink Himalayan Sea Salt	25 mg	†
Bamboo Stem Extract	25 mg	†
Trace Ionic Sea Minerals	12 mg	†

* Daily Value is based on a 2,000-calorie diet.

† Daily value not established.

Other ingredients: Organic Rice Syrup Solids, Non-GMO Citric Acid, Natural Watermelon Flavor.



Available on Amazon

Stay Hydrated



Nutrition Facts	Citrus Salt	Raspberry Salt	Orange Salt
	(6g)	(6g)	(6g)
12 servings per container Serving size 1 stick pack			
Amount per serving			
Calories	10	10	10
	% Daily Value*	% Daily Value*	% Daily Value*
Total Fat	0g	0g	0g
Saturated Fat	0g	0g	0g
Trans Fat	0g	0g	0g
Cholesterol	0mg	0mg	0mg
Sodium	1000mg	1000mg	1000mg
	43%	43%	43%
Total Carbohydrate	2g	2g	2g
Dietary Fiber	0g	0g	0g
Total Sugars	0g	0g	0g
Includes Added Sugars	0g	0g	0g
Protein	0g	0g	0g
	0%	0%	0%
*The % Daily Value (DV) tells you how much a nutrient in a serving of food contributes to a daily diet. 2,000 calories a day is used for general nutrition advice.	Vitamin D 0mcg 0%	Calcium 0mg 0%	Iron 0mg 0%
	Potassium 200mg 4%	Magnesium 60mg 15%	

INSTRUCTIONS:
Mix 1 stick pack with 16oz of water.
...or get creative and send us your ideas for how to stay salty at ideas@DrinkLMNT.com

Ingredients: Salt (Sodium Chloride), Citric Acid, Magnesium Malate, Potassium Chloride, Natural Flavors, Stevia Leaf Extract.

Available at Amazon



pink lemonade

Nutrition Facts	
Serving size 1 Scoop / Stickpack	
Amount per serving	
Calories	
0	
% Daily Value	
Total Fat	0g 0%
Saturated Fat	0g 0%
Trans Fat	0g
Cholesterol	0mg 0%
Sodium	55mg 2%
Total Carbohydrate	0g 0%
Dietary Fiber	0g 0%
Total Sugars	0g
Includes 0g Added Sugars	0%
Protein	0g 0%
Calcium	65mg 6%
Potassium	250mg 6%
Vitamin C	100mg 110%
Phosphorus	70mg 6%
Magnesium	100mg 25%
Zinc	1mg 8%
Manganese	0.2mg 8%
Chloride	78mg 4%

Ingredients: citric acid, magnesium citrate, potassium phosphate, potassium aspartate, calcium citrate, natural flavors, calcium ascorbate, salt, rebaudioside A (organic stevia leaf extract), color blend (beet juice and annatto extract), zinc citrate, manganese citrate and cherry juice powder.

Available at Amazon and some grocery stores

Stay Hydrated



Nutrition Facts	Amount/Serving	% Daily Value*	Amount/Serving	% Daily Value*
	Total Fat 0g		0%	Total Carbohydrate <1g
	Saturated Fat 0g	0%	Dietary Fiber 0g	0%
	Trans Fat 0g		Total Sugars 0g	
Cholesterol 0mg		0%	Includes 0g Added Sugars	0%
Sodium 300mg		13%	Protein 0g	
Calories per serving 0	Vitamin D 0% • Calcium 2% • Iron 0% • Potassium 2% • Magnesium 15% • Chloride 6%			

*The % Daily Value (DV) tells you how much a nutrient in a serving of food contributes to a daily diet. 2,000 calories a day is used for general nutrition advice.

Ingredients: Sodium citrate, citric acid, magnesium phosphate, natural flavors, potassium citrate, salt, Rebadioside A (stevia extract), tricalcium phosphate. Manufactured in a facility that also processes milk, soy, egg, wheat, peanuts and tree nuts. Manufactured for The UCAN Company, Woodbridge, CT, 06525, USA ©2021 The UCAN Company All rights reserved

Available on Amazon



Available on Amazon & most grocery stores

SUPPLEMENT FACTS	
Serving Size 16 fl oz (475ml)	
Servings Per Tub 1	
Amount Per Serving	
Calories 8	
Calories from Fat 0	
%Daily Value*	
Total Fat 0g	
Sodium 359mg	14%
Potassium 101mg	2%
Total Carb 1g	1%
Sugars 0g	
Protein 0g	
Vitamin C 38mg	62%
Riboflavin .5mg	30%
Calcium 13mg	2%
Magnesium 25mg	6%
*Percent Daily Values are based on a 2000 calorie diet.	
Not a significant source of other nutrients.	

Condiments



Nutrition Facts Servings: About 16, **Serv. size: 1 Tbsp (15g)**, Amount per serving:
Calories 15, Total Fat 0g (0% DV), Sat. Fat 0g (0% DV), Trans Fat 0g, **Cholest. 0mg** (0% DV), **Sodium 220mg** (10% DV), **Total Carb. 3g** (1% DV), Fiber 0g (0% DV), Total Sugars 3g (Incl. 2g Added Sugars, 4% DV), **Protein 0g**, Vit. D (0% DV), Calcium (0% DV), Iron (0% DV), Potas. (0% DV).

Nutrition Facts

Serving Size 1 Tbsp (15 g)

Servings Per Container 21

Amount Per Serving

Calories 10

	% Daily Value*
Total Fat 0g	%
Sodium 105mg	5%
Total Carbohydrates 2g	1%
Total Sugars 1g	
Added Sugars 0g	%
Protein 0g	

* Percent Daily Values are based on a 2,000 calorie diet. Your daily values may be higher or lower depending on your calorie needs.



Available on Amazon & most grocery stores

Marinades



Nutrition Facts	
Serving Size 2 Tbsp (30g)	
Servings Per Container 12	
Amount Per Serving	
Calories 90	Calories from Fat 80
% Daily Value *	
Total Fat 9g	14%
Saturated Fat 1.5g	8%
Trans Fat 0g	
Cholesterol 0g	0%
Sodium 170mg	7%
Total Carbohydrate 3g	1%
Dietary Fiber 0g	0%
Sugars 2g	
Protein 0g	



Nutrition Facts	
about 40 servings per container	
Serving size 1 Tbsp. (18g)	
Amount per serving	
Calories	10
% DV*	
Total Fat 0g	0%
Sodium 980mg	41%
Total Carbohydrate <1g	0%
Protein 2g	
Potassium 130mg	2%

Not a significant source of Sat. Fat, Trans Fat, Cholesterol, Fiber, Total Sugars, Added Sugars, Vitamin D, Calcium and Iron.

*%DV = % Daily Value



Nutrition Facts	
189 servings per container	
Serving size 1 tsp (5mL)	
Amount per serving	
Calories	5
% Daily Value	
Total Fat 0g	0%
Sodium 310mg	13%
Total Carbohydrate 0g	0%
Protein 1g	<1%

Not a significant source of saturated fat, trans fat, cholesterol, dietary fiber, total sugars, added sugars, vitamin D, calcium, iron and potassium.

Nutrition Facts	
About 23 Servings Per Container	
Serving size 1 Tbsp (15g)	
Amount per serving	
Calories	10
% Daily Value*	
Total Fat 0.5g	1%
Sodium 130mg	6%
Total Carbohydrate 1g	0%
Dietary Fiber 0g	0%
Total Sugars 0g	
Includes 0g Added Sugars	0%
Protein 0g	

Not a significant source of saturated fat, trans fat, cholesterol, dietary fiber, total sugars, added sugars, vitamin D, calcium, iron and potassium.

*The % Daily Value tells you how much a nutrient in a serving of food contributes to a daily diet. 2,000 calories a day is used for general nutrition advice.



Available on Amazon and most grocery stores

Sauces & Dips



Nutrition Facts	
6 servings per container	
Serving size 1/2 cup (125g)	
Amount per serving	
Calories	25
% Daily Value*	
Total Fat 0g	0%
Saturated Fat 0g	0%
Trans Fat 0g	
Cholesterol 0mg	0%
Sodium 310mg	14%
Total Carbohydrate 5g	2%
Dietary Fiber 2g	6%
Total Sugars 3g	
Includes 0g Added Sugars	0%
Protein 1g	



Nutrition Facts	
about 5 servings per container	
Serving Size 1/2 cup (125g)	
Amount per serving	
Calories	80
% Daily Value*	
Total Fat 6g	7%
Saturated Fat 1g	4%
Trans Fat 0g	
Cholesterol 0mg	0%
Sodium 430mg	19%
Total Carbohydrate 6g	2%
Dietary Fiber 1g	5%
Total Sugars 4g	
Includes 0g Added Sugars	0%
Protein 2g	
Vitamin D 0mcg	0%
Calcium 20mg	0%
Iron 0.2mg	0%
Potassium 370mg	8%

*The % Daily Value (DV) tells you how much a nutrient in a serving of food contributes to a daily diet. 2,000 calories a day is used for general nutrition advice.



Nutrition Facts	
About 23 servings per container	
Serving Size 1 Tbsp (15g)	
Amount per serving	
Calories	15
% Daily Value*	
Total Fat 0.5g	1%
Saturated Fat 0g	0%
Trans Fat 0g	
Cholesterol 0mg	0%
Sodium 400mg	17%
Total Carbohydrate 1g	0%
Dietary Fiber 0g	0%
Total Sugars 0g	
Includes 0g Added Sugar	0%
Protein 0g	
Vitamin D 0mcg	0%
Calcium 2mg	0%
Iron 0mg	0%
Potassium 1mg	0%

*The % Daily Value tells you how much a nutrient in a serving of food contributes to a daily diet. 2,000 calories a day is used for general nutrition advice.

Calories per gram:
Fat 9 • Carbohydrate 4 • Protein 4



Nutrition Facts	
Serving Size 1/4 Cup (61g)	
Servings Per Container About 7	
Amount Per Serving	
Calories 60	
% Daily Value*	
Total Fat 4.5g	6%
Saturated Fat 1g	5%
Trans Fat 0g	
Polyunsaturated Fat 0.5g	
Monounsaturated Fat 3g	
Cholesterol 0mg	0%
Sodium 350mg	15%
Total Carbohydrates 4g	1%
Dietary Fiber 0g	0%
Total Sugars <1g	
Added Sugars 0g	0%
Protein <1g	
Vitamin D 0mcg	0%
Calcium 0mg	0%
Iron 0mg	0%
Potassium 0mg	0%

*Percent Daily Values are based on a 2,000 calorie diet. Your daily values may be higher or lower depending on your calorie needs.

Available on Amazon and most grocery stores

Sauces & Dip



Nutrition Facts	Amount per serving		% DV	
	Amount per serving	% DV	Amount per serving	% DV
10 servings per container	Total Fat 2.5g	3%	Total Carb. 2g	1%
Serving size 2 Tbsp (30g)	Sat. Fat 0g	0%	Dietary Fiber 1g	4%
Calories per serving 35	Trans Fat 0g		Total Sugars 0g	
	Cholesterol 0mg	0%	Incl. Og Added Sugars	0%
	Sodium 220mg	10%	Protein 1g	
	Vitamin D 0% • Calcium 2% • Iron 0% • Potassium 2%			

KEEP REFRIGERATED. Use within 7 days of opening.
Best in Josephan or in microwave safe dish.
© 2018 Siete Family Foods • MADE IN THE USA
Dist. by: Siete Family Foods, Austin, TX 78731
Questions? Email us at: queso@sietefoods.com



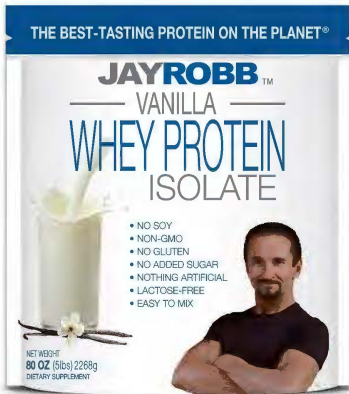
Nutrition Facts	Servings: About 10, Serv. size: 2 Tbsp (28g).
Amount per serving:	Calories 110, Total Fat 12g (15% DV), Sat Fat 1.5g (8% DV), Trans Fat 0g, Polyunsat. Fat 1.5g, Monounsat. Fat 8g, Cholest. 10mg (3% DV), Sodium 280mg (12% DV), Total Carb. 2g (1% DV), Fiber 0g (0% DV), Total Sugars 0g (incl. Og Added Sugars, 0% DV), Protein 0g, Vit. D (0% DV), Calcium (0% DV), Iron (2% DV), Potas. (2% DV).
INGREDIENTS: AVOCADO OIL, WATER, ORGANIC APPLE CIDER VINEGAR, ORGANIC EGG YOLK, ORGANIC DISTILLED VINEGAR, SEA SALT, ORGANIC GUM ARABIC, ORGANIC GUAR GUM, CREAM OF TARTAR, ORGANIC ONION POWDER, ORGANIC GARLIC POWDER, ORGANIC LEMON JUICE CONCENTRATE, POTATO STARCH, NUTRITIONAL YEAST, ORGANIC PARSLEY, ORGANIC CHIVES, ORGANIC DILL, ORGANIC BLACK PEPPER, ORGANIC ROSEMARY EXTRACT.	
*ADDS A NEGLIGIBLE AMOUNT OF SUGAR.	
CONTAINS: EGG	
DISTRIBUTED BY: PRIMAL NUTRITION, LLC OXNARD CA 93030 • 1-888-774-6259	



Nutrition Facts	Servings: About 9, Serv. size: 2 Tbsp (30g).
Amount per serving:	Calories 120, Total Fat 12g (15% DV), Sat Fat 1.5g (8% DV), Trans Fat 0g, Polyunsat. Fat 8g, Monounsat. Fat 8g, Cholest. 10mg (3% DV), Sodium 310mg (13% DV), Total Carb. 2g (1% DV), Fiber 0g (0% DV), Total Sugars 0g (incl. Og Added Sugars, 0% DV), Protein 0g, Vit. D (0% DV), Calcium (0% DV), Iron (0% DV), Potas. (0% DV).
INGREDIENTS: AVOCADO OIL, WATER, CAPSICUM PEPPER SAUCE (AGED RED CAPSICUM PEPPERS, DISTILLED VINEGAR, WATER, SALT, GARLIC, ORGANIC APPLE CIDER VINEGAR, ORGANIC EGG YOLK, POTATO STARCH, ORGANIC GUM ARABIC, ORGANIC GUAR GUM, ORGANIC DISTILLED VINEGAR, ORGANIC GARLIC POWDER, ORGANIC ONION POWDER, ORGANIC LEMON JUICE CONCENTRATE, SEA SALT, NUTRITIONAL YEAST, TAMARIND SEED GUM, ORGANIC CAPSICUM PEPPER, ORGANIC PARSLEY, ORGANIC CHIVES, ORGANIC BLACK PEPPER, ORGANIC ROSEMARY EXTRACT.	
*ADDS A NEGLIGIBLE AMOUNT OF SUGAR.	
CONTAINS: EGG	
DISTRIBUTED BY: PRIMAL NUTRITION, LLC OXNARD CA 93030 • 1-888-774-6259	

Available at Amazon & some grocery stores

Protein Powders



Supplement Facts
Serving Size: 1 scoop (30g)
Serving Per Container: 75 (approximate)

Amount Per Serving	%Daily Values
Calories	110
Calories From Fat	0
Total Fat	0g 0%
Cholesterol	<5mg <1%
Total Carbohydrate	2g <1%
Sugars	<1g *
Protein	25g 50%
Calcium	125mg 10%
Sodium	70mg 3%
Potassium	180mg 5%

* Percent Daily Values are based on a 2,000 calorie diet. Your daily values may be higher or lower depending on your calorie needs.
* Not established



Nutrition Facts
About 42 servings per container
Serving size 1 Scoop (21g)

Amount per serving	% Daily Value*
Calories	90
Total Fat 4.5g	9%
Saturated Fat 4g	20%
Trans Fat 0g	
Cholesterol 0mg	0%
Sodium 30mg	1%
Total Carbohydrate 5g	2%
Dietary Fiber 2g	7%
Total Sugars 1g	
Includes 0g Added Sugars	0%
Protein 10g	20%
Vitamin D 0mcg	0%
Calcium 54mg	4%
Iron 1.3mg	8%
Potassium 176mg	4%

* The % Daily Value (DV) tells you how much a nutrient in a serving of food contributes to a daily diet. 2,000 calories a day is used for general nutrition advice.



Nutrition Facts
Serving Size 2 scoops (28g)
Servings Per Container about 12

Amount Per Serving	% Daily Value*
Calories 110	Calories from Fat 15
Total Fat 2g	3%
Saturated Fat 1g	5%
Trans Fat 0g	
Cholesterol 65mg	18%
Sodium 50mg	2%
Potassium 190mg	8%
Total Carbohydrate 5g	2%
Dietary Fiber 1g	4%
Sugars 2g	
Protein 20g	
Vitamin A 2%	Vitamin C 0%
Calcium 10%	Iron 10%

* Percent Daily Values are based on a 2,000 calorie diet. Your daily values may be higher or lower depending on your calorie needs.

	Calories: 2,000	2,500
Total Fat	Less than 65g	25g
Sat Fat	Less than 30g	7g
Cholesterol	Less than 300mg	300mg
Sodium	Less than 2,400mg	2,400mg
Potassium	Less than 3,500mg	3,500mg
Total Carbohydrate	Less than 30g	37g
Dietary Fiber	25g	30g

Calories per gram: Fat 9 • Carbohydrate 4 • Protein 4

Ingredients: Organic dairy whey protein concentrate, Organic cocoa* (processed with alkali), Organic stevia leaf extract, Sunflower lecithin.
*Fair Trade Certified™ by Fair Trade USA

CONTAINS MILK.
Gluten Free, Non-GMO, 100% Free, 100% Free, 100% Dairy Free
Packaged in a plant that handles, stores and processes milk, eggs, soy, and wheat.

STORE IN A COOL, DRY PLACE
Viscosity Specialty Protein
Pawnee, NE 68209
1-888-262-7488
teraswhey.com
CERTIFIED ORGANIC BY MOSA
50022-4



NUTRITION FACTS
Servings Per Container: 28
Serving Size: 1 Scoop (32g)

Amount Per Serving	% Daily Value*
Calories	120
Total Fat 1.5g	2%
Saturated Fat 0g	0%
Trans Fat 0g	
Cholesterol 30mg	10%
Sodium 135mg	6%
Total Carbohydrate 3g	1%
Dietary Fiber <1g	0%
Total Sugars 1g	
Includes 0g Added Sugars	0%
Protein 25g	50%
Vitamin D 4mcg	20%
Calcium 138mg	10%
Iron 1mg	6%
Potassium 193mg	4%

* Percent daily values are based on a 2,000 calorie diet. Your daily values may be higher or lower depending on your calorie needs.



Nutrition Facts
About 24 servings per container
Serving size 1 Scoop (16.9g)

Amount per serving	% Daily Value*
Calories	80
Total Fat 3g	4%
Saturated Fat 2.5g	13%
Trans Fat 0g	
Cholesterol 0mg	0%
Sodium 60mg	3%
Total Carbohydrate 2g	1%
Dietary Fiber 0g	0%
Total Sugars 0g	
Includes 0g Added Sugars	0%
Protein 11g	
Vitamin D 0mcg	0%
Calcium 0mg	0%
Iron 0.5mg	2%
Potassium 77mg	2%

* The % Daily Value (DV) tells you how much a nutrient in a serving of food contributes to a daily diet. 2,000 calories a day is used for general nutrition advice.



Nutrition Facts
Serving size 1 scoop (29g)

Amount Per Serving	% Daily Value*
Calories	120
Total Fat 2.5g	3%
Saturated Fat 0g	0%
Trans Fat 0g	
Cholesterol 0mg	0%
Sodium 270mg	12%
Total Carbohydrate 3g	1%
Dietary Fiber 1g	4%
Total Sugars 1g	
Includes 0g Added Sugars	0%
Protein 20g	20%
Vitamin D 0mcg	0%
Calcium 60mg	4%
Iron 4.6mg	25%
Potassium 90mg	2%
Vitamin A 60mcg	6%
Vitamin C 6mg	6%
Vitamin K 67mcg	60%

* The % Daily Value tells you how much a nutrient in a serving of food contributes to a daily diet. 2,000 calories a day is used for general nutrition advice.

Available at Amazon & some grocery stores

Protein Powders



Total Fat 3g
Saturated Fat 1.5g
Trans Fat 0g
Cholesterol 40mg
Sodium 140mg
Total Carbohydrate 7g
Dietary Fiber 0g
Total Sugars 4g
Includes 2g Added Sugars
Protein 25g



Nutrition Facts

About 9 servings per container
Serving Size 1 Scoop (26g)

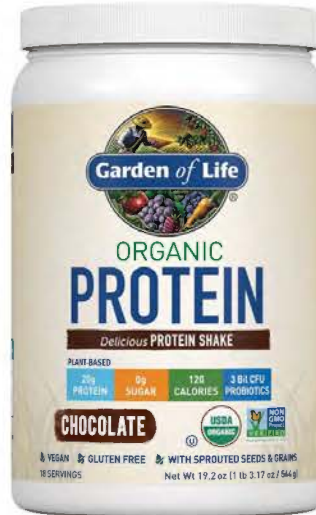
Amount per serving	100
Calories	
	% Daily Value*
Total Fat 5g	6%
Saturated Fat 5g	25%
Trans Fat 0g	
Cholesterol 0mg	0%
Sodium 40mg	2%
Total Carbohydrate 4g	1%
Dietary Fiber 0g	0%
Total Sugars 0g	
Includes 0g Added Sugars	0%
Protein 10g	20%



Nutrition Facts

About 15 servings per container
Serving size 2 Scoops (39 g)

Amount per serving	160
Calories	
	% Daily Value*
Total Fat 6g	8%
Saturated Fat 4g	20%
Trans Fat 0g	
Cholesterol 0mg	0%
Sodium 330mg	14%
Total Carbohydrate 10g	4%
Dietary Fiber 4g	14%
Total Sugars 2g	
Includes 2g Added Sugars	4%
Protein 20g	32%



Nutrition Facts

18 servings per container approximately
Serving size 1 scoop (30g)

Amount per serving	120
Calories	
	% Daily Value*
Total Fat 2.5g	3%
Saturated Fat 0g	
Trans Fat 0g	
Polyunsaturated Fat 1g	
Monounsaturated Fat 0.5g	
Cholesterol 0mg	0%
Sodium 200mg	9%
Total Carbohydrate 5g	2%
Dietary Fiber 4g	14%
Total Sugars 0g	
Includes 0g Added Sugars	0%
Protein 20g	27%



Nutrition Facts

20 servings per container
Serving size 1 scoop (30g)

Amount per serving	110
Calories	
	% Daily Value*
Total Fat 0g	0%
Saturated Fat 0g	0%
Trans Fat 0g	
Cholesterol 10mg	3%
Sodium 100mg	4%
Total Carbohydrate 1g	0%
Dietary Fiber 0g	0%
Total Sugars <1g	
Includes 0g Added Sugars	0%
Protein 25g	50%



Nutrition Facts

30 Servings Per Container
Serving Size 1 Scoop (30g)

Amount per serving	110
Calories	
	% Daily Value*
Total Fat 2.5g	3%
Saturated Fat .5g	3%
Trans Fat 0g	
Cholesterol 0mg	0%
Sodium 360mg	16%
Total Carbohydrate 6g	2%
Dietary Fiber 2g	7%
Total Sugars 1g	
Includes 0g Added Sugars	0%
Protein 17g	

Available at Amazon & some grocery stores

Protein Bars



DARK CHOCOLATE NUTS & SEA SALT					
Amount/Serving		% Daily Value	Amount/Serving		% Daily Value
Total Fat	15g	19%	Total Carb.	16g	6%
Sat. Fat	3g	15%	Fiber	7g	25%
Trans Fat	0g		Total Sugars	5g	
Polyunsaturated Fat	3.5g		Incl. 4g of Added Sugars	8%	
Monounsaturated Fat	7g		Sugar Alcohol	0g	
Cholesterol	0mg	0%	Protein	6g	
Sodium	140mg	6%			
Vitamin D 0% • Calcium 4% • Iron 6% • Potassium 4%					

Nutrition Facts

Serving size
1 bar (40g)

Calories per serving **180**



Amount Per Serving		% DV*
Calories	195	
Calories From Fat	95	
Total Fat	11 g	17%
Saturated Fat	4 g	20%
Trans Fat	0 g	
Cholesterol	0 mg	0%
Sodium	80 mg	3%
Potassium	100 mg	3%
Total Carbohydrate	10 g	3%
Dietary Fiber	1 g	4%
Sugars	5 g	
Protein	15 g	30%



Nutrition Facts	
Serving Size 46g 1bar	
Servings Per Container 12	
Amount Per Serving	
Calories 170	Calories from Fat 80
% Daily Value*	
Total Fat 5g	14%
Saturated Fat 2.5g	13%
Trans Fat 0g	
Cholesterol 0mg	0%
Sodium 85mg	3%
Potassium 150mg	4%
Total Carbohydrate 21g	7%
Dietary Fiber 14g	55%
Sugars 4g	
Protein 12g	24%



Nutrition Facts	
Serving Size 1 Bar (60g)	
Servings Per Container 10	
Amount Per Serving	
Calories 230	Calories from Fat 70
% Daily Value*	
Total Fat 8g	12%
Saturated Fat 3g	15%
Trans Fat 0g	
Cholesterol 0mg	0%
Sodium 190mg	8%
Total Carbohydrate 25g	8%
Dietary Fiber 2g	8%
Sugars 0g	
Sugar Alcohol 12g	
Other Carb. 9g	
Protein 20g	38%
Vitamin A 0%	Vitamin C 0%
Calcium 10%	Iron 15%

Available at Amazon and most grocery stores

Nutrition Facts

12 Servings Per Container
Serving Size 1 Bar (45g)

Amount Per Serving
Calories 220

	% Daily Value*
Total Fat 14g	18%
Saturated Fat 6g	30%
Trans Fat 0g	
Cholesterol 0mg	0%
Sodium 120mg	5%
Total Carbohydrate 14g	5%
Dietary Fiber 5g	18%
Total Sugars 2g	
Includes 0g Added Sugars	0%
Protein 12g	12%

Nutrition Facts

12 servings per container
Serving size 1 bar (31g)

Amount Per Serving
Calories 170

	% Daily Value*
Total Fat 13g	17%
Saturated Fat 9g	45%
Trans Fat 0g	
Cholesterol 0mg	0%
Sodium 100mg	4%
Total Carbohydrate 7g	3%
Dietary Fiber 3g	11%
Total Sugars 1g	
Includes <1g Added Sugars	0%
Sugar Alcohol 2g	
Protein 10g	20%



Calories: 160

Total Fat 7g

Saturated Fat 6g

Trans Fat 0g

Cholesterol 10mg

Sodium 140mg

Total Carbohydrate 30g

Dietary Fiber 10g

Sugars 1g

Added Sugars 0g

Erythritol 4g

Protein 16g

Nutrition Facts

12 servings per container
Serving size 1 bar (60g)

Amount per serving
Calories 190

	% Daily Value*
Total Fat 4.5g	6%
Saturated Fat 2g	10%
Trans Fat 0g	
Cholesterol 0mg	0%
Sodium 160mg	7%
Total Carbohydrate 25g	9%
Dietary Fiber 16g	57%
Total Sugars 1g	
Includes 0g Added Sugars	
Sugar Alcohol 5g	
Protein 8g	



Nutrition Facts

12 servings per container
Serving size 1 bar (60g)

Amount per serving
Calories 220

	% Daily Value*
Total Fat 9g	12%
Saturated Fat 5g	25%
Trans Fat 0g	
Polyunsaturated Fat 1g	
Monounsaturated Fat 2.5g	
Cholesterol 10mg	3%
Sodium 140mg	6%
Total Carbohydrate 23g	8%
Dietary Fiber 6g	25%
Soluble Fiber 6g	
Insoluble Fiber 2g	
Total Sugars 1g	
Includes 0g Added Sugars	0%
Sugar Alcohol 5g	
Protein 20g	38%



Available on Amazon & most grocery stores

Creamers



Supplement Facts		
Serving Size 2 Scoops (24 g)		
Servings Per Container About 12		
	Amount Per Serving	% Daily Value
Calories	140	
Calories from Fat	80	
Total Fat	9 g	14%
Saturated Fat	9 g	45%
Total Carbohydrate	4 g	1%
Total Sugars	1 g	
Protein	10 g	
Sodium	55 mg	2%
Collagen peptides (from bovine hide)	10 g	

*Percent Daily Values (DV) are based on a 2,000 calorie diet. Daily Value not established.



Nutrition Facts	
13 Servings Per Container	
Serving Size 3 TBSP	
Amount Per Serving	50
% Daily Values*	
Total Fat 5g	8%
Saturated Fat 4g	20%
Trans Fat 0g	
Cholesterol 15mg	5%
Sodium 10mg	0%
Total Carbohydrate	0%
Dietary Fiber 0g	0%
Total Sugars 0g	
Includes 0g Added Sugars	0%
Protein 3g	

Available on Amazon & some grocery stores



Nutrition Facts		
Serving Size 1 Tbsp (15 mL)		
Servings Per Container About 32		
Amount Per Serving	Calories from Fat 5	
% Daily Value*		
Total Fat 0.5g		1%
Sat Fat 0.5g		3%
Trans Fat 0g		
Cholesterol 0mg		0%
Sodium 0mg		0%
Total Carb <1g		0%
Dietary Fiber 0g		0%
Sugars <1g		
Protein 0g		
Vitamin A 0%	Vitamin C 0%	
Calcium 0%	Iron 0%	

*Percent Daily Values are based on a 2,000 calorie diet. Your daily values may be higher or lower depending on your calorie needs.

Total Fat	Less than 45g	85g
Sat Fat	Less than 20g	25g
Cholesterol	Less than 300mg	300mg
Sodium	Less than 2,400mg	2,400mg
Total Carbohydrate	300g	375g
Dietary Fiber	25g	30g



Nutrition Facts	
50 servings per container	
Serving size 1 tbsp (15 mL)	
Amount per serving	10
% Daily Value*	
Total Fat 0.5g	1%
Saturated Fat 0g	0%
Trans Fat 0g	
Cholesterol 0mg	0%
Sodium 15mg	1%
Total Carbohydrate 0g	0%
Dietary Fiber 0g	0%
Total Sugars 0g	
Includes 0g Added Sugars	0%
Protein 0g	
Vitamin D 0mcg	0%
Calcium 25mg	2%
Iron 0mg	0%
Potassium 0mg	0%

*The % Daily Value tells you how much a nutrient in a serving of food contributes to a daily diet.



Nutrition Facts		
About 32 servings per container		
Serving size 1 Tbsp (15mL)		
Amount per serving	Calories 50	
% Daily Value*		
Total Fat 5g		7%
Saturated Fat 3.5g		17%
Cholesterol 20mg		7%
Sodium 5mg		0%
Total Carbohydrate <1g		1%
Protein 1g		

*The % Daily Value (DV) tells you how much a nutrient in a serving of food contributes to a daily diet. 2,000 calories a day is used for general nutrition advice.



Nutrition Facts		
About 63 servings per container		
Serving size 2 Tbsp (30mL)		
Amount per serving	Calories 40	
% Daily Value*		
Total Fat 3g		4%
Saturated Fat 2g		10%
Trans Fat 0g		
Cholesterol 15mg		4%
Sodium 15mg		1%
Total Carbohydrate 1g		1%
Dietary Fiber 0g		0%
Total Sugars 1g		
Includes 0g Added Sugars		0%
Protein 1g		
Vitamin D 0mcg		0%
Calcium 50mg		4%
Iron 0mg		0%
Potassium 0mg		0%

*The % Daily Value (DV) tells you how much a nutrient in a serving of food contributes to a daily diet. 2,000 calories a day is used for general nutrition advice.

Available at your local grocery store

Dietary Fat



Nutrition Facts	
20 servings per container	
Serving Size 1 Tbsp (13g)	
Amount per serving	
Calories	120
Total Fat 13g	17%
Saturated Fat 10g	50%
Trans Fat 0g	
Cholesterol 40mg	13%
Sodium 0mg	0%
Total Carbohydrate 0g	0%
Dietary Fiber 0g	0%
Total Sugars 0g	
Includes 0g Added Sugars	0%
Protein 0g	
Vitamin D 0mcg	0%
Calcium 0mg	0%
Iron 0mg	0%
Potassium 0mg	0%

*The % Daily Value (DV) tells you how much a nutrient in a serving of food contributes to a daily diet. 2,000 calories a day is used for general nutrition advice.



Nutrition Facts	
Serving Size - 1Tbsp (14g)	
Servings Per Container 38	
Amount Per Serving	
Calories 100	Calories from Fat 100
% Daily Value*	
Total Fat 11g	17%
Saturated Fat 7g	35%
Trans Fat (g) 0g	
Cholesterol 40mg	13%
Sodium 65mg	3%
Total Carbohydrate 0g	0%
Protein 0g	
Vitamin A	8%

* Percent Daily Values are based on a 2,000 calorie diet.

SALTED SWEET CREAM BUTTER
INGREDIENTS: PASTEURIZED CREAM, SALT.
CONTAINS MILK.



Nutrition Facts	
33 Servings Per Container	
Serving Size 1 Tbsp (15 mL)	
Amount Per Serving	
Calories	130
Total Fat 14g	18%
Saturated Fat 2g	10%
Trans Fat 0g	
Polyunsaturated Fat 1.5g	
Monounsaturated Fat 11g	
Cholesterol 0mg	0%
Sodium 0mg	0%
Total Carbohydrate 0g	0%
Dietary Fiber 0g	0%
Total Sugars 0g	
Includes 0g Added Sugars	0%
Protein 0g	
Vit. D 0mcg 0%	Calcium 0mg 0%
Iron 0mg 0%	Potas. 0mg 0%

*The % Daily Value (DV) tells you how much a nutrient in a serving of food contributes to a daily diet. 2,000 calories a day is used for general nutrition advice.



Nutrition Facts	
Servings Per Container: about 33, Serv. Size: 1 Tbsp (14g), Amount Per Serving: Calories 130, Total Fat 14g (18% DV), Sat. Fat 2g (10% DV), Trans Fat 0g, Monounsat. Fat 10g, Cholest. 0mg (0% DV), Sodium 0mg (0% DV), Total Carb. 0g (0% DV), Dietary Fiber 0g (0% DV), Total Sugars 0g, Incl. 0g Added Sugars (0% DV), Protein 0g, Vitamin D 0mcg (0% DV), Calcium 0mg (0% DV), Iron 0mg (0% DV), Potassium 0mg (0% DV). %DV = % Daily Value	



Supplement Facts		
Serving Size 1 Tablespoon (15 mL)		
Servings Per Container about 63		
	Amount Per Serving	% Daily Value
Calories	100	
Calories from Fat	100	
Total Fat	14 g	22%*
Saturated Fat	14 g	70%*
Trans Fat	0 g	†
Polyunsaturated Fat	0 g	†
Monounsaturated Fat	0 g	†

* Percent Daily Values are based on a 2,000 calorie diet. † Daily Value not established.



Nutrition Facts	
Valeur nutritive	
Per 1 tablespoon (15 ml)	
Pour 1 cuillère à soupe (15 ml)	
Calories 130	% Daily Value*
% valeur quotidienne*	
Fat / Lipides 14 g	19 %
Saturated / saturés 14 g	70 %
Trans / trans 0 g	
Carbohydrates / Glucides 0 g	
Protein / Protéines 0 g	
Sodium 0 mg	0 %

Not a significant source of fibre, sugars, cholesterol, potassium, calcium or iron.
 Source négligeable fibres, sucres, cholestérol, potassium, calcium et fer.
 *5% is a little, 15% or more is a lot.
 *5% ou moins c'est peu, 15% ou plus c'est beaucoup.

Available at your local grocery store

Yogurt



NUTRITION INFORMATION		
Serving size per package: 1.25 (Serving size: 100g)		
	Average Quantity Per Serving	Average Quantity Per 100g
ENERGY:	625kJ (123Cal)	635kJ (233Cal)
PROTEIN TOTAL:	1.8g	1.6g
LIPOPHILIC FAT TOTAL:	Nil Detected	Nil Detected
FAT TOTAL:	21.7g	21.7g
SATURATED FAT:	21.6g	20.6g
CARBOHYDRATE:	8.1g	6.1g
SUGARS:	1.8g	1.6g
SUGAR ALCOHOL:	4.7g	4.7g

INGREDIENTS:
Organic Coconut Milk (97%), Organic Tapioca Starch, Live Vegan Cultures.

ACO Certified Organic



Serving Size: 1 cup
Serving Per Container: 1
Amount :

Calories: 80

Total Fat 2g

Saturated Fat 1g

Trans Fat 0g

Cholesterol 5mg

Sodium 35mg

Total Carbohydrate 3g

Dietary Fiber 0g

Sugars 2g

Added Sugars 0g

Protein 12g

Nutrition Facts	
Serving size 1 container (150g)	
Servings per container 1	
Amount Per Serving	160
Calories	
	% Daily Value*
Total Fat 10g	13%
Saturated Fat 1g	5%
Trans Fat 0g	
Cholesterol 0mg	0%
Sodium 10mg	0%
Total Carbohydrate 8g	3%
Dietary Fiber 4g	14%
Total Sugars 2g	
Includes 0g Added Sugars	0%
Protein 11g	
Vit. D 0%	Calcium 10%
Iron 10%	Potas. 2%

*The % Daily Value (DV) tells you how much a nutrient in a serving of food contributes to a daily diet.



Nutrition Facts	
Serving Size 1 Container (150g)	
Servings Per Package 4	
Amount Per Serving	
Calories 110	Calories from Fat 0
% Daily Value*	
Total Fat 0g	0%
Saturated Fat 0g	0%
Trans Fat 0g	
Cholesterol <5mg	1%
Sodium 65mg	3%
Potassium 210mg	6%
Total Carbohydrate 13g	4%
Dietary Fiber 6g	24%
Sugars 6g	
Protein 15g	30%

Serving Size: 1 Container
Amount Amount per serving:

Calories: 60

Total Fat 0g

Saturated Fat 0g

Trans Fat 0g

Cholesterol 10mg

Sodium 65mg

Total Carbohydrate 5g

Dietary Fiber 1g

Sugars 0g

Added Sugars 0g

Protein 11g



Serving Per Container: 1
Amount Amount per serving:

Calories: 170

Total Fat 4g

Saturated Fat 1.5g

Trans Fat 0g

Cholesterol 15mg

Sodium 190mg

Total Carbohydrate 9g

Dietary Fiber 0g

Sugars 3g

Added Sugars 0g

Sugar Alcohol 2g

Protein 25g

Available at your local grocery store

Milk



Nutrition Facts	
Serving Size 1 cup (240 mL)	
Servings Per Container 4	
Amount Per Serving	
Calories 30	Calories from Fat 20
% Daily Value*	
Total Fat 2.5g	4%
Saturated Fat 0g	0%
Trans Fat 0g	
Polyunsaturated Fat 0.5g	
Monounsaturated Fat 1.5g	
Cholesterol 0mg	0%
Sodium 170mg	7%
Potassium 160mg	5%
Total Carbohydrate 1g	0%
Dietary Fiber <1g	4%
Sugars 0g	
Protein 1g	
Vitamin A 10% • Vitamin C 0%	
Calcium 45% • Iron 4%	
Vitamin D 25% • Vitamin E 50%	
Riboflavin 2% • Phosphorus 2%	
Magnesium 4% • Zinc 0%	
Copper 2% • Manganese 4%	
*Percent Daily Values are based on a 2,000 calorie diet. Your daily values may be higher or lower depending on your calorie needs:	
Calories: 2,000 2,500	
Total Fat	Less than 65g 80g
Sat Fat	Less than 20g 25g
Cholesterol	Less than 300mg 300mg
Sodium	Less than 2,400mg 2,400mg
Potassium	3,500mg 3,500mg
Total Carbohydrate	300g 375g
Dietary Fiber	25g 30g

Nutrition Facts	
4 servings per container	
Serving size 1 cup (240mL)	
Amount Per Serving	
Calories 40	
% Daily Value*	
Total Fat 3g	4%
Saturated Fat 0g	0%
Trans Fat 0g	
Polyunsaturated Fat 0.5g	
Monounsaturated Fat 2g	
Cholesterol 0mg	0%
Sodium 170mg	7%
Total Carbohydrate 2g	1%
Dietary Fiber <1g	2%
Total Sugars 0g	
Includes 0g Added Sugars 0%	
Protein 1g	
Vitamin D 0mcg	0%
Calcium 450mg	35%
Iron 1mg	6%
Potassium 210mg	4%
Vitamin E 5mg	35%
Phosphorus 30mg	2%
Magnesium 25mg	6%
*The percent Daily Value (DV) tells you how much a nutrient in a serving of food contributes to a daily diet. 2,000 calories a day is used for general nutrition advice.	

Nutrition Facts	
Serving Size 1 cup (240 mL)	
Servings Per Container 8	
Amount Per Serving	
Calories 30	Calories from Fat 20
% Daily Value*	
Total Fat 2.5g	4%
Saturated Fat 0g	0%
Trans Fat 0g	
Polyunsaturated Fat 0.5g	
Monounsaturated Fat 1.5g	
Cholesterol 0mg	0%
Sodium 170mg	7%
Potassium 160mg	5%
Total Carbohydrate 1g	0%
Dietary Fiber <1g	4%
Sugars 0g	
Protein 1g	
Vitamin A 10%	Vitamin C 0%
Calcium 45%	Iron 4%
Vitamin D 25%	Vitamin E 50%
Riboflavin 2%	Phosphorus 2%
Magnesium 4%	Zinc 0%
Copper 2%	Manganese 4%
*Percent Daily Values are based on a 2,000 calorie diet. Your daily values may be higher or lower depending on your calorie needs:	
Calories: 2,000 2,500	
Total Fat	Less than 65g 80g
Sat Fat	Less than 20g 25g
Cholesterol	Less than 300mg 300mg
Sodium	Less than 2,400mg 2,400mg
Potassium	3,500mg 3,500mg
Total Carbohydrate	300g 375g
Dietary Fiber	25g 30g

Nutrition Facts	
Serving Size 1 cup (240 mL)	
Servings Per Container 4	
Amount Per Serving	
Calories 40	Calories from Fat 30
% Daily Value*	
Total Fat 3.5g	5%
Saturated Fat 1g	5%
Trans Fat 0g	
Polyunsaturated Fat 0.5g	
Monounsaturated Fat 1.5g	
Cholesterol 0mg	0%
Sodium 120mg	5%
Potassium 170mg	5%
Total Carbohydrate 1g	0%
Dietary Fiber <1g	4%
Sugars 0g	
Protein 1g	
Vitamin A 10%	Vitamin C 0%
Calcium 45%	Iron 4%
Vitamin D 25%	Vitamin E 50%
Riboflavin 2%	Phosphorus 2%
Magnesium 4%	Zinc 0%
Copper 2%	Manganese 6%
*Percent Daily Values are based on a 2,000 calorie diet. Your daily values may be higher or lower depending on your calorie needs:	
Calories: 2,000 2,500	
Total Fat	Less than 65g 80g
Sat Fat	Less than 20g 25g
Cholesterol	Less than 300mg 300mg
Sodium	Less than 2,400mg 2,400mg
Potassium	3,500mg 3,500mg
Total Carbohydrate	300g 375g
Dietary Fiber	25g 30g

Available at your local grocery store



Nutrition Facts	
6 servings per container	
Serving size 8 fl oz (240 mL)	
Amount per serving	
Calories	45
	% Daily Value*
Total Fat 4g	5%
Saturated Fat 1g	5%
Trans Fat 0g	
Cholesterol 0mg	0%
Sodium 170mg	7%
Total Carbohydrate 1g	0%
Dietary Fiber 1g	4%
Total Sugars 0g	
Includes 0g Added Sugars	0%
Protein 1g	
Vitamin D 0mcg	0%
Calcium 430mg	35%
Iron 1mg	6%
Potassium 40mg	0%

*The % Daily Value tells you how much a nutrient in a serving of food contributes to a daily diet.



Nutrition Facts	
4 Servings Per Container	
Serving size 8 fl oz (240mL)	
Amount per serving	
Calories	35
	% Daily Value*
Total Fat 3g	4%
Saturated Fat 0g	0%
Trans Fat 0g	
Cholesterol 0mg	0%
Sodium 160mg	7%
Total Carbohydrate 1g	0%
Dietary Fiber 1g	4%
Total Sugars 0g	
Includes 0g Added Sugars	0%
Protein 1g	
Vitamin D 0mcg	0%
Calcium 430mg	35%
Iron 1mg	6%
Potassium 30mg	0%

*The % Daily Value tells you how much a nutrient in a serving of food contributes to a daily diet.



Nutrition Facts	
Serving Size 1 cup (240 mL)	
Servings Per Container About 7	
Amount Per Serving	
Calories 150	Calories from Fat 80
	% Daily Value*
Total Fat 8g	12%
Saturated Fat 5g	25%
Trans Fat 0g	
Cholesterol 30mg	10%
Sodium 120mg	5%
Potassium 400mg	11%
Total Carbohydrate 6g	2%
Dietary Fiber 0g	0%
Sugars 6g	
Protein 13g	26%
Vitamin A 20%	Calcium 40%
Vitamin D 25%	Riboflavin 20%
Vitamin B12 20%	Phosphorus 25%
Magnesium 6%	Zinc 10%
Not a significant source of Vitamin C & Iron	
* Percent Daily Values are based on a 2,000 calorie diet.	



Nutrition Facts		
Serving Size 1 cup (240mL)		
Servings Per Container 4		
Amount Per Serving		
Calories 45	Calories from Fat 40	
	% Daily Value*	
Total Fat 4.5g	7%	
Saturated Fat 4g†	20%	
Trans Fat 0g		
Cholesterol 0mg	0%	
Sodium 0mg	0%	
Potassium 40mg	1%	
Total Carbohydrate 2g	1%	
Dietary Fiber 1g	4%	
Sugars 0g		
Protein 0g		
Vitamin A 10%	Vitamin C 0%	
Calcium 10%	Iron 0%	
Vitamin D 30%	Folate 6%	
Vitamin B12 50%	Magnesium 10%	
Zinc 4%	Selenium 8%	
*Percent Daily Values are based on a 2,000 calorie diet. †Your daily values may be higher or lower depending on your calorie needs.		
Calories: 2,000 2,500		
Total Fat	Less than 65g	80g
Sat Fat	Less than 20g	25g
Cholesterol	Less than 300mg	300mg
Sodium	Less than 2,400mg	2,400mg
Total Carbohydrate	300g	375g
Dietary Fiber	25g	30g



Nutrition Facts	
5 servings per container	
Serving size 1/3 Cup (80mL)	
Amount Per Serving	
Calories	150
	% Daily Value*
Total Fat 15g	19%
Saturated Fat 14g	68%
Trans Fat 0g	
Cholesterol 0mg	0%
Sodium 17mg	<1%
Total Carbohydrate 5g	2%
Dietary Fiber 0g	0%
Total Sugars 3g	
Includes 0g Added Sugars	0%
Protein 2g	
Vitamin D 0mcg 0%	Calcium 11mg <1%
Iron 3mg 14%	Potassium 103mg 2%

*The % Daily Value (DV) tells you how much a nutrient in a serving of food contributes to a daily diet. 2,000 calories a day is used for general nutrition advice.

Available at your local grocery store

Drink Responsibly

Available at your local grocery or liquor store



Nutrition Facts	
1 serving per container	
Serving size 1 can (473 mL/1 pt.)	
Amount per serving	
Calories	140
	% DV*
Total Fat 0g	0%
Sodium 25mg	1%
Total Carbohydrate 2g	1%
Total Sugars 2g	
Includes 2g Added Sugars	4%
Protein 0g	0%
Not a significant source of total fat, saturated fat, trans fat, cholesterol, dietary fiber, protein, vitamin D, calcium, iron and potassium.	
*%DV = % Daily Value	

CONTAINS LESS THAN 1% JUICE

Nutrition Facts	
1 serving per container	
Serving size 1 can (12 fl oz)	
Amount per serving	
Calories	100
	% Daily Value*
Total Fat 0g	0%
Sodium 30mg	1%
Total Carbohydrate 2g	1%
Total Sugars 2g	
Includes 2g Added Sugars	4%
Protein 0g	0%
Not a significant source of saturated fat, trans fat, cholesterol, dietary fiber, vitamin D, calcium, iron, and potassium.	
*Percent Daily Values are based on a 2,000 calorie diet.	

Nutrition Facts	
1 serving per container	
Serving size 12 FL.OZ. (355mL)	
Amount per serving	
Calories	100
	% Daily Value*
Total Fat 0g	0%
Saturated Fat 0g	0%
Trans Fat 0g	
Cholesterol 0mg	0%
Sodium 30mg	1%
Total Carbohydrate 2g	<1%
Dietary Fiber 0g	0%
Total Sugars 1g	
Includes 1g Added Sugars	<1%
Protein 0g	
Vitamin D 0mcg	0%
Calcium 0mg	0%
Iron 0mg	0%
Potassium 0mg	0%
*The % Daily Value (DV) tells you how much a nutrient in a serving of food contributes to a daily diet. 2,000 calories a day is used for general nutrition advice.	



Drink Responsibly



Various FitVine Wines
Available at Central Market,
www.fitvinewine.com



Dry Farm Wines
Available www.Dryfarmwines.com



Available on Amazon & some grocery stores



Nutrition Facts	
Serving Size 4 Fl Oz	
Servings Per Container 6	
Amount Per Serving	
Calories 0	Calories from Fat 0
% Daily Value	
Total Fat 0g	0%
Trans Fat 0g	0%
Cholesterol 0mg	
Sodium 55mg	2%
Total Carbohydrates 5g	2%
Sugars 0g	
Sugar Alcohol 4g	
Protein 0g	0%

* Percent Daily Values are based on a 2,000 calorie diet



Nutrition Facts	
Serving Size 4 Fl Oz	
Servings Per Container 6	
Amount Per Serving	
Calories 0	Calories from Fat 0
% Daily Value	
Total Fat 0g	0%
Trans Fat 0g	0%
Cholesterol 0mg	
Sodium 55mg	2%
Total Carbohydrates 5g	2%
Sugars 0g	
Sugar Alcohol 4g	
Protein 0g	0%

* Percent Daily Values are based on a 2,000 calorie diet

Available on Amazon & some grocery stores

Available on Amazon

Beverages



Beverages



Helpful Tools



SodaStream



Veggie Spiralizer



Veggie Chopper



Mandolin



Nutri Bullet



Food Scale



Sous Vide Wand

Fuel

